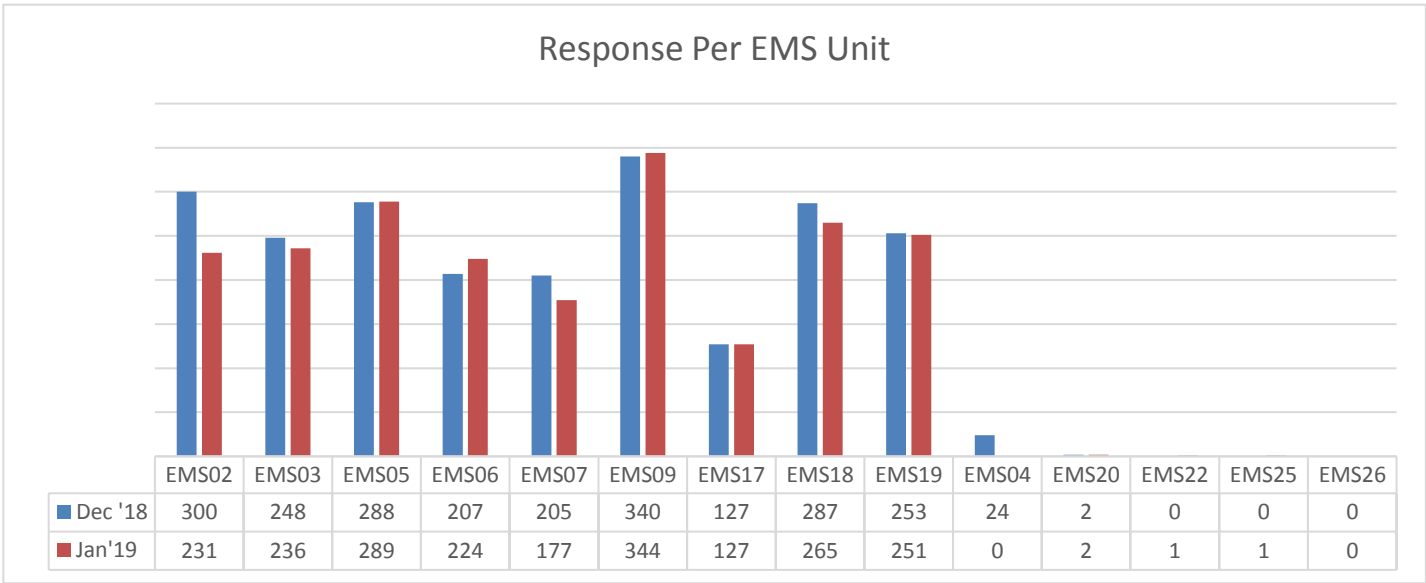
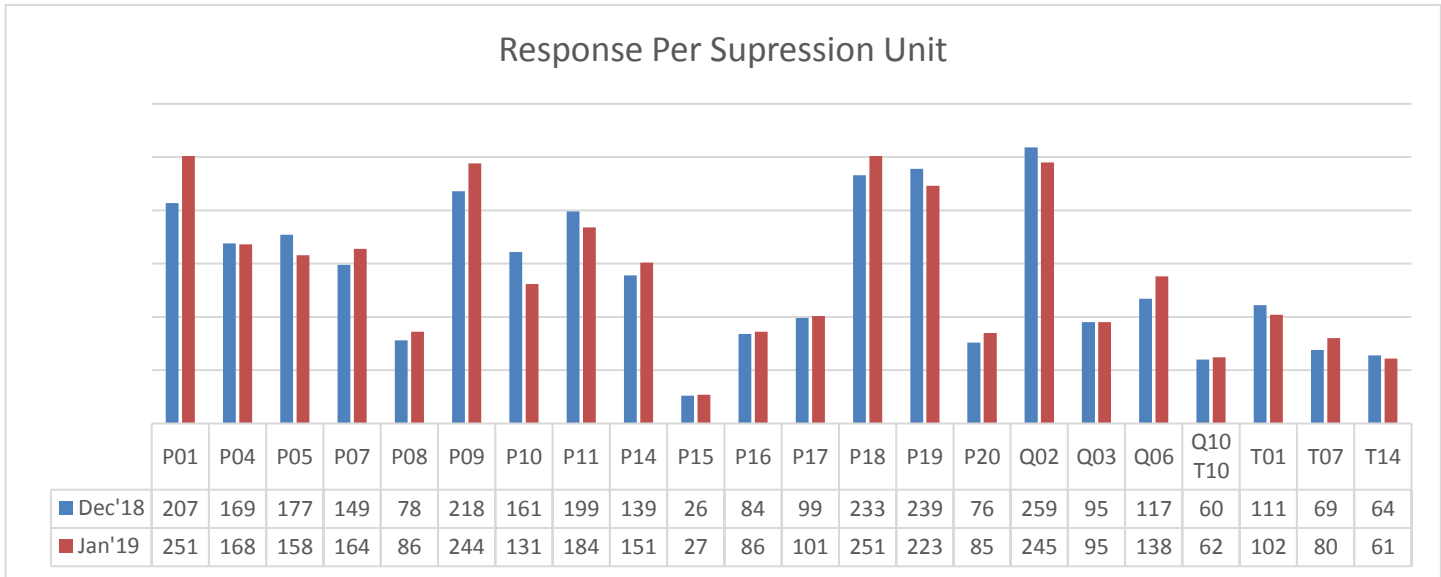




The Kansas City Kansas Department responded to 2589 incidents during the month of December 2018 based on CAD and NFIRS data.



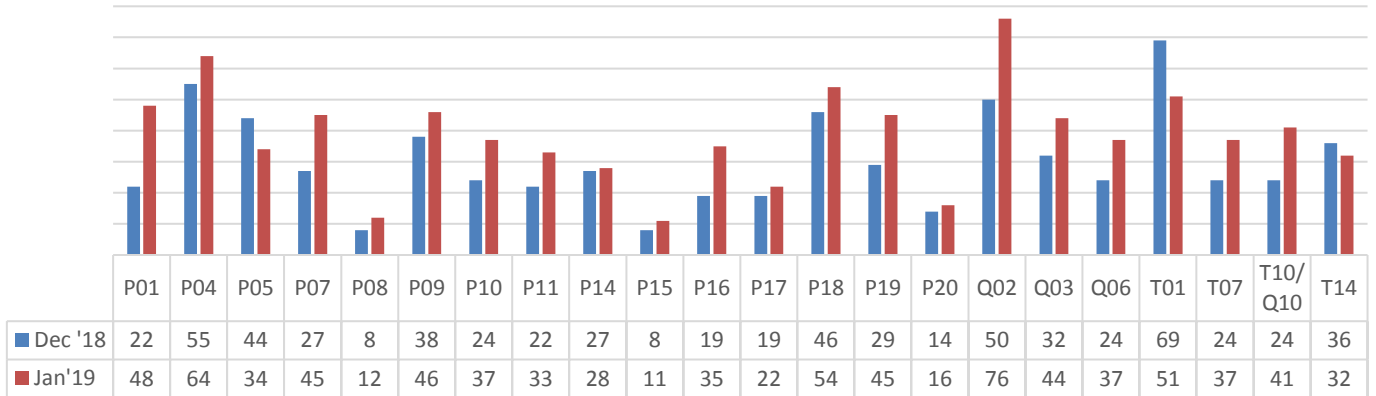
KCKFD EMS Units responded to an incident 2015 times in January 2019, 2099 times in December 2018 and 2171 times in January of 2018. This number is generated by CAD and NFIRS data. If more than one unit responded, each unit is counted as a response, however the incident is counted only once for our total response count.



KCKFD Suppression Units responded to an incident 3036 times in January 2019 and 3093 times in December of 2018. In January of 2018 we responded to 3274 incidents. This number is generated by CAD and NFIRS data. If more than one unit responded, each unit is counted as a response, however, the incident is counted only once for our total response count.

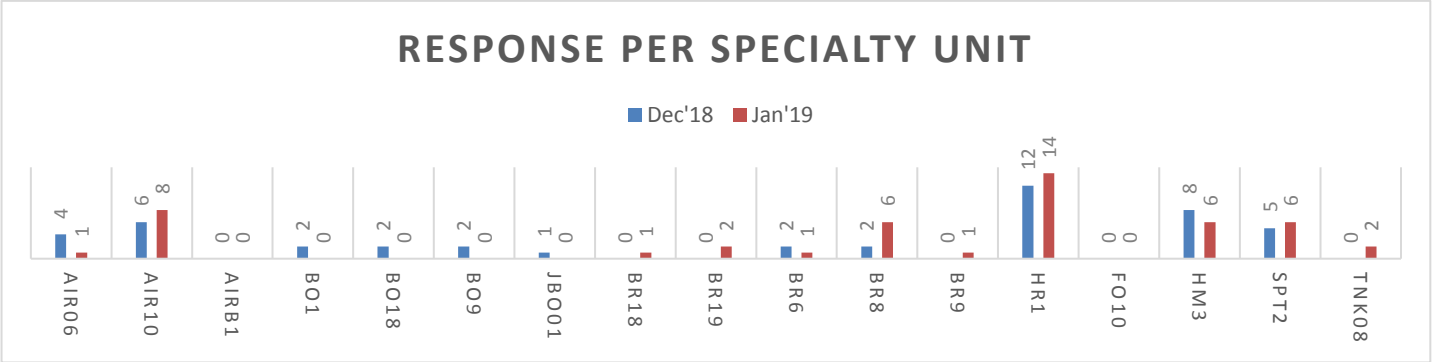


Fire Calls

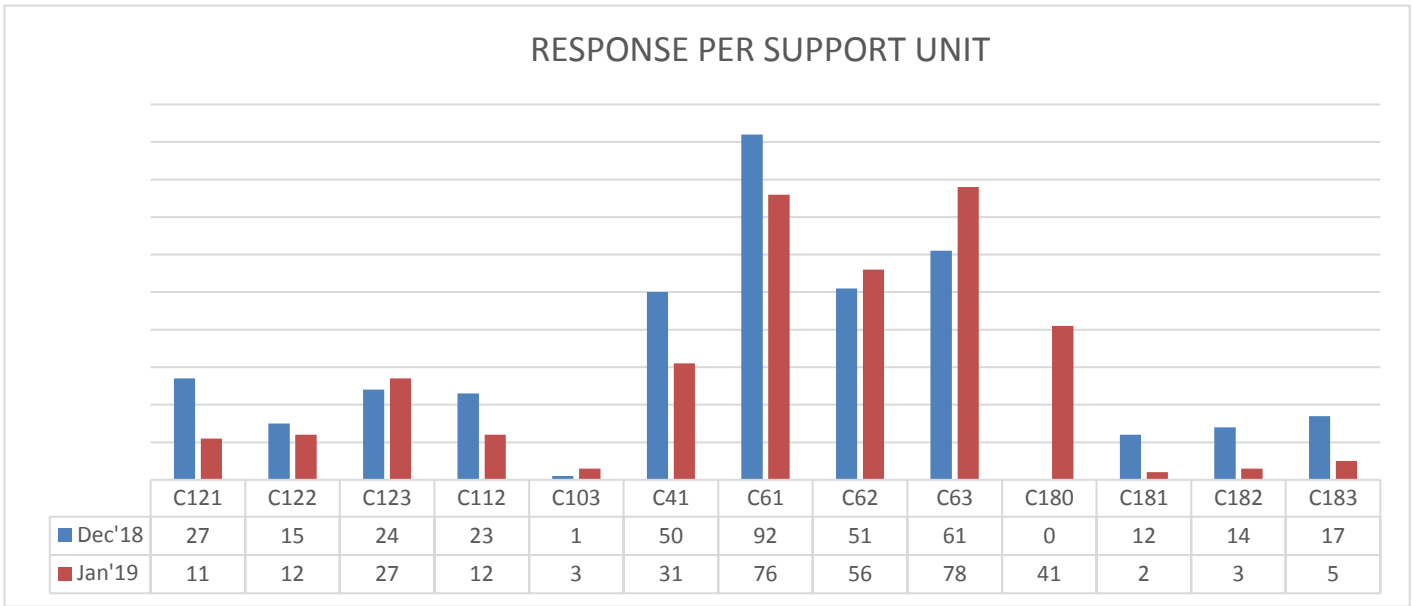


KCKFD Suppression Units responded to a Fire call 848 time in January of 2019. In December of 2018 we responded to 661 Fire calls. This number is generated CAD and NFIRS data. These calls include:

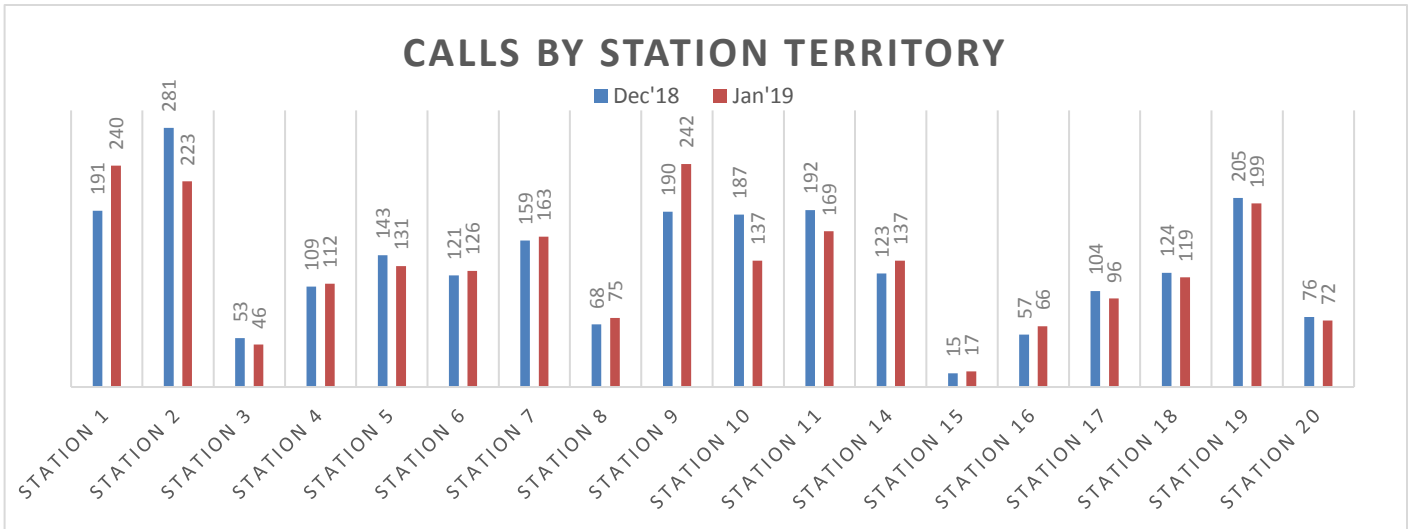
- F A/A Business/ Multi Family - F A/A Business/ Multi Family
- F A/A Residence - F A/A Residence
- F Business/ Multi Family Fire - F Business/ Multi Family Fire
- F Controlled Burning - F Controlled Burning
- F Family Dwelling Fire - F Family Dwelling Fire
- F Fire Outside Structure - F Fire Outside Structure
- F Fire/ Explosion Unclassified - F Fire/ Explosion Unclassified
- F Rekindle - F Rekindle
- F Smoke/ Odor Removal - F Smoke/ Odor Removal
- F Spill/ Leak- No Fire - F Spill/ Leak- No Fire
- F Trees/Brush/Grass Fire - F Trees/Brush/Grass Fire
- F Unauthorized Burning - F Unauthorized Burning
- F Vehicle Fire - F Vehicle Fire
- F Vicinity Alarm - F Vicinity Alarm
- Fire - Fire Residential
- Fire Brush Truck - Fire Brush Truck
- Fire Car - Fire Car
- Fire UTV - Fire Utility Vehicle



KCKFD Specialty Units responded to an incident 48 times in January 2019 and 46 times in December 2018. This number is generated by CAD and NFIRS data. If more than one unit responded, each unit is counted as a response, however the incident is counted only once for our total response count.



KCKFD SUPPORT Units responded to an incident 357 times in January 2019 and 387 times in December 2018. This number is generated by CAD and NFIRS data. If more than one unit responded, each unit is counted as a response, however the incident is counted only once for our total response count. In January we began using new Support Unit numbers. In particular, our Fire Investigators used to be tracked by the shift the worked, ie. 1st shift investigator was Car 81, 2nd shift was Car 82, etc. Going forward all responses by a shift investigator will be calculated as Car 180, regardless of shift. Many of our chief officers respond to incidents, they will be included in the monthly report if their responses are of note.



Calls by station territory are determined by first due territory response. Apparatus often respond to incidents in first due territory other than their own. For example: If Pumper 20 responds to an incident in Pumper 19's first due territory, the activity will be reflected in Pumper 20's Response per Suppression Unit but in Station 19's Response by Station Territory. Note: The non-emergency transfers from PMC and KUMC, which elevated the data for Station 10 and Station 19, has been removed from the above table. 173 non-emergency transfers counted only in the EMS Unit that completed the transfer. There are 24 calls not accounted for on this graph. We responded on Mutual Aid, 4 times to Bonner Springs and once to Edwardsville.

Incident Types

100 Fire, other	1
111 Building fire	20
113 Cooking fire, confined to container	2
114 Chimney or flue fire, confined to chimney or flue	1
118 Trash or rubbish fire, contained	1
130 Mobile property (vehicle) fire, other	1
131 Passenger vehicle fire	14
132 Road freight or transport vehicle fire	1
140 Natural vegetation fire, other	1
142 Brush or brush-and-grass mixture fire	3
143 Grass fire	3
151 Outside rubbish, trash or waste fire	2
154 Dumpster or other outside trash receptacle fire	2
160 Special outside fire, other	3
300 Rescue, EMS incident, other	1
311 Medical assist, assist EMS crew	12
321 EMS call, includes calls where	1,176



3211 EMS Refusal	157
3212 EMS call No EMS needed	224
3213 Non Emergency Transfer	169
322 Motor vehicle accident with injuries	35
3221 MVA with refusal	14
323 Motor vehicle/pedestrian accident (MV Ped)	1
324 Motor vehicle accident with no injuries.	44
353 Removal of victim(s) from stalled elevator	3
356 High-angle rescue	1
412 Gas leak (natural gas or LPG)	18
424 Carbon monoxide incident	5
441 Heat from short circuit (wiring), defective/worn	5
442 Overheated motor	2
444 Power line down	28
4441 Utility lines down, not power	20
445 Arcing, shorted electrical equipment	24
460 Accident, potential accident, other	1
511 Lock-out	2
520 Water problem, other	1
522 Water or steam leak	2
531 Smoke or odor removal	2
550 Public service assistance, other	4
551 Assist police or other governmental agency	3
552 Police matter	22
553 Public service	20
5531 Public Relations	4
554 Assist invalid	93
561 Unauthorized burning	19
611 Dispatched & canceled en route	117
621 Wrong location	4
622 No incident found on arrival at dispatch address	52
641 Vicinity alarm (incident in other location)	1
651 Smoke scare, odor of smoke	17
652 Steam, vapor, fog or dust thought to be smoke	3
661 EMS call, party transported by non-fire agency	12
671 HazMat release investigation w/no HazMat	12
700 False alarm or false call, other	3
711 Municipal alarm system, malicious false alarm	2
714 Central station, malicious false alarm	3
731 Sprinkler activation due to malfunction	8
733 Smoke detector activation due to malfunction	10



735 Alarm system sounded due to malfunction	30
736 CO detector activation due to malfunction	6
740 Unintentional transmission of alarm, other	8
741 Sprinkler activation, no fire - unintentional	2
743 Food on the stove/steam/cigarette smoke Automatic Fire Alarm	60
744 Detector activation, no fire - unintentional	7
745 Alarm system activation, no fire - unintentional	9
813 Wind storm, tornado/hurricane assessment	1
Unknown	10

NFIRS

The Goal of the KCKFD is 100% completion for all NFIRS reporting.

We had 2,544 calls for service for the month of January 2019.

There was an initial completion percentage of 92.7%.

1st Shift completed 93.9%

2nd Shift completed 94.5%

3rd Shift completed 89.4%.

As of this 2/7/19, there are still 34 reports still needing to be completed which makes the current completion percentage after 1 notification at 98.7%.

The month of January was the 1st month (since I've been doing this) that we had our previous months reports turned into the State Fire Marshal's Office on time!!!-Jim

SMOKE DETECTOR INSTALLATIONS

In January Of 2019 KCKFD Crews installed 8 smoke detectors in 3 residences. Thanks to the following crews:

Second Shift

Station 14 – 2 Smoke Detectors

Third Shift

Station 1 – 3 Smoke Detectors

Station 5 – 3 Smoke Detectors

KCKFD crews have installed 8 smoke detectors in 2019.



EMS DIVISION

Transports:

Jan 2019 1392
Jan 2018 1451

TUKHS 650 YTD 650
PMC 320 YTD 320
SMMC 149 YTD 149
TMC-HH 038
CMH 039

Refusals 235 (and 3 N/A, 1 Not Recorded for a total of 239 non-transport reports in Elite)

2019 Runs Per Month:

January	1,631
---------	-------

Jan 2019 Runs by Hour of Day:

00:00:00 - 00:59:59	47	2.88%
01:00:00 - 01:59:59	43	2.64%
02:00:00 - 02:59:59	31	1.90%
03:00:00 - 03:59:59	47	2.88%
04:00:00 - 04:59:59	38	2.33%
05:00:00 - 05:59:59	41	2.51%
06:00:00 - 06:59:59	40	2.45%
07:00:00 - 07:59:59	60	3.68%
08:00:00 - 08:59:59	67	4.11%
09:00:00 - 09:59:59	78	4.78%
10:00:00 - 10:59:59	92	5.64%
11:00:00 - 11:59:59	91	5.58%
12:00:00 - 12:59:59	98	6.01%
13:00:00 - 13:59:59	82	5.03%
14:00:00 - 14:59:59	102	6.25%
15:00:00 - 15:59:59	98	6.01%
16:00:00 - 16:59:59	104	6.38%
17:00:00 - 17:59:59	70	4.29%
18:00:00 - 18:59:59	75	4.60%
19:00:00 - 19:59:59	74	4.54%
20:00:00 - 20:59:59	76	4.66%
21:00:00 - 21:59:59	69	4.23%
22:00:00 - 22:59:59	59	3.62%
23:00:00 - 23:59:59	49	3.00%
Total: 1,631		Total: 100.00%



Jan 2019 Runs by Day of Week:

Sunday	200	12.26%
Monday	221	13.55%
Tuesday	236	14.47%
Wednesday	260	15.94%
Thursday	279	17.11%
Friday	212	13.00%
Saturday	223	13.67%
Total: 1,631		Total: 100.00%

Jan 2019 Runs by Provider Impression:

Acute abdomen discomfort pain (R10.0)	95
Acute pain, not elsewhere classified (G89.1)	88
ALOC Altered mental status unspecified etiology (R41.82)	87
no complaints or findings; Adult, Encounter, (Z00.00)	71
Weakness (R53.1)	66
Seizures without status epilepticus (G40.909)	62
Behavioral/Psychiatric Disorder (F99)	60
Chest pain Angina (I20.9)	56
Nausea and vomiting (R11)	44
Respiratory COPD with exacerbation (J44.1)	39
Anxiety (F41.9)	38
Trauma Injury of head (S09.90)	36
Chest Pain, Other (non-cardiac) (R07.89)	34
Back pain non traumatic (M54.9)	31
Respiratory distress, acute (J80)	31
Syncope and collapse (R55)	29
Dizziness or light-headedness or vertigo (R42)	28
Trauma injuries multi-system unspecified (T14.90)	26
	24
Respiratory Asthma with exacerbation (J45.901)	23
Acute Stroke suspected (I63.9)	22
Suicidal ideations (R45.851)	21
Alcohol use, unspecified with intoxication (F10.92)	19
Trauma Injury of hip (S79.91)	19
Trauma Injury of lower back (S39.92)	18
Hypertension (I10)	17
Hypoglycemia - Diabetes (E13.64)	17
Trauma Injury of lower leg (S89.9)	17
Headache (R51)	16
Hyperglycemia - Diabetes (E13.65)	16
Trauma Injury of face (S09.93)	15
Trauma Injury of shoulder and upper arm (S49.9)	15
Bedridden (Z74.01)	14
Cardiac arrest- Obvious Death (I46)	14



Fever (R50.9)	13
Respiratory disorder, unspecified (J98.9)	13
Trauma Injury of neck (S19.9)	13
Chronic pain, not elsewhere classified (G89.2)	12
Malaise (R53.81)	12
Other reduced mobility (Z74.09)	12
Trauma Injury of ankle (S99.91)	12
Vomiting, unspecified (R11.10)	12
Poisoning, drugs, medication, or other Intentional (T50.902)	11
Hypotension (I95.9)	10
Seizures with status epilepticus (G40.901)	10
Trauma Injury of forearm (S59.91)	10
Respiratory Pneumonia, unspecified (J18.9)	9
Unspecified infectious disease (B99.9)	9
Cancer, unspecified (D49)	8
Cardiac arrest (I46.9)	8

Jan 2019 Runs by Dispatch Reason:

Sick Person	329
Breathing Problem	189
Transfer/Interfacility/Palliative Care	173
Falls	124
Chest Pain (Non-Traumatic)	100
Convulsions/Seizure	86
Traffic/Transportation Incident	79
Unknown Problem/Person Down	79
Psychiatric Problem/Abnormal Behavior/Suicide Attempt	61
Unconscious/Fainting/Near-Fainting	48
Stroke/CVA	44
Hemorrhage/Laceration	40
Diabetic Problem	35
Abdominal Pain/Problems	34
Overdose/Poisoning/Ingestion	32
Back Pain (Non-Traumatic)	28
Cardiac Arrest/Death	26
Assault	21
Heart Problems/AICD	21
Traumatic Injury	17
Stab/Gunshot Wound/Penetrating Trauma	15
Allergic Reaction/Stings	10



Jan 2019 Procedures Administered:

	1,051
Vascular - (IV)Extremity Vein Catheterization (392230005)	369
Cardiac - 12 lead ECG (268400002)	226
Assessment - Patient Assessment (422618004)	130
Cardiac - 4 lead ECG (428803005)	101
Vascular - Glucometer (Blood Glucose Check) (166900001)	39
Musculoskeletal - Cervical Collar Applied C-Collar (49689007)	32
Vascular - Saline Lock (425074000)	27
Respiratory - NC nasal cannula (371907003)	26
Soft Tissue - Wound Care (225358003)	13
Respiratory - BVM Bagged Ventilations (Via Mask) (425447009)	12
Respiratory - ETCO2 Digital Capnography (425543005)	12
Respiratory - CPAP (47545007)	7
Respiratory - Intubation (Orotracheal) (232674004)	6
Vascular - IO Intraosseous cannulation (430824005)	6
Respiratory - NRB Nonrebreather oxygen mask (427591007)	5
Respiratory - OPA Oropharyngeal Airway Insertion (7443007)	5

# of patients identified as meeting Trauma Routing Criteria (& transported RLS)	18
# of patients identified as meeting STEMI Routing Criteria	05
# of patients identified as meeting STROKE Routing Criteria	23

Thanks for all you do to serve and protect our community!