



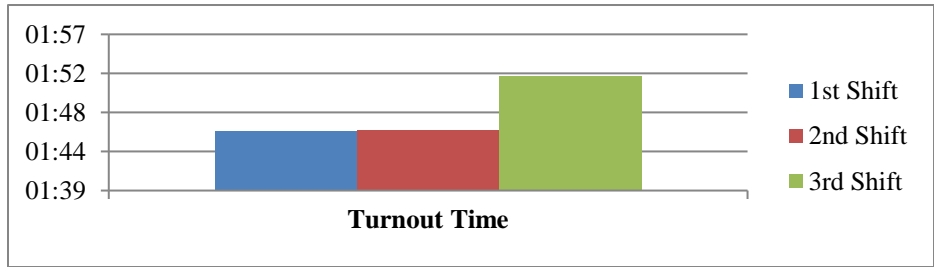
NFIRS

We responded to 2,702 incidents in May. There was an initial NFIRS completion percentage of 90.6%. 3rd Shift led the way with 92.8%, followed by 1st Shift @ 89.8% and then 2nd Shift with 89.3%. There are currently 120 reports still needing to be completed which is a 95.6% completion percentage after 1 notification. These “lower than average” numbers may be attributed to the error message turned on for “Actions Taken” and “Lights and Sirens” for the apparatus module. These have always been required by KCKFD, but we had trouble getting the error to activate. Tyler Tech was here on 5/20 and was able to get that to turn on. It will take a few weeks for crews to get accustomed to this. There was an email sent out on 5/20 notifying everybody of this change.

We had an initial NFIRS completion percentage for May of 90.6%.

- 1st Shift – 89.8%
- 2nd Shift – 89.3%.
- 3rd Shift – 90.6%.

May Turnout Time by Shift



May 90th Percentile Turnout Time			
	1st Shift	2nd Shift	3rd Shift
	01:46	01:46	01:52
Total Calls	603	529	558
Calls over Benchmark	32	29	31
% Over Benchmark	5.3%	5.5%	5.6%

These graphics show our Turnout times that fall in the 90th Percentile. As well as the percentage of Turnout times that exceed our current benchmark of 120 seconds, remember that our goal is 60 seconds for EMS calls and 80 seconds for Fire calls.

Easier explanation: For May, more than 90% of the time, 1st shift's turnout time is 1 minute 47.6seconds, 2nd shift's turnout time is 1 minute and 46 seconds, and 3rd shift's turnout time is 1 minute and 52 seconds. ***This is the first time all three shifts have been under 2 minutes!*** Keep up the good work.



KCKFD MONTHLY ACTIVITY REPORT / MAY 2019

May Turnout Times

Below is a chart showing the 90th percentile monthly turnout time calculated per apparatus/per shift. We have excluded all non-emergency calls when calculating the 90th percentiles. Day times are figured from 0800-2200 and 0700-0800. Night times are calculated from 2200 to 0700.

Battalion 1

		1st		2nd		3rd	
P1	Day	1:43	59	1:59	41	1:56	63
	Night	2:03	20	2:17	16	2:27	23
T1	Day	1:54	37	1:57	24	1:50	29
	Night	2:18	11	2:27	6	2:07	8
EMS5	Day	1:31	80	1:32	53	1:56	66
	Night	2:25	116	2:18	21	2:53	26
P5	Day	1:41	40	1:22	27	2:08	31
	Night	2:13	10	1:36	11	2:40	11
EMS9	Day	1:45	82	1:48	71	1:18	93
	Night	2:50	27	2:37	33	1:44	26
P9	Day	1:39	54	1:33	61	1:17	61
	Night	2:32	20	2:05	14	2:06	22
C61	Day	1:13	25	2:21	26	1:39	26
	Night	1:50	4	3:15	6	2:21	6
P11	Day	1:32	49	2:20	44	1:32	51
	Night	2:02	11	2:04	20	1:59	12
P14	Day	1:30	43	1:22	35	1:20	32
	Night	2:05	8	1:26	10	2:17	13
T14	Day	1:31	13	1:45	14	1:47	13
	Night	2:13	3	0:00	0	2:01	6
P15	Day	1:35	7	1:40	6	1:51	7
	Night	0:00	0	3:03	2	1:54	1



KCKFD MONTHLY ACTIVITY REPORT / MAY 2019

Battalion 2

		1st		2nd		3rd	
EMS3	Day	1:31	64	2:56	16	1:50	33
	Night	2:47	20	2:20	13	3:16	18
Q3	Day	1:27	29	2:56	16	1:50	33
	Night	2:04	11	2:47	4	3:08	6
EMS7	Day	1:42	43	1:36	43	1:51	39
	Night	2:27	17	2:20	14	2:16	15
P7	Day	1:19	37	1:29	34	1:41	30
	Night	2:16	16	2:17	12	2:21	16
T7	Day	1:22	16	2:09	21	1:24	15
	Night	1:46	10	2:26	5	2:15	10
P10	Day	2:39	30	1:30	22	1:56	33
	Night	2:48	15	2:10	10	2:29	12
T10	Day	2:09	14	1:18	20	1:40	11
	Night	4:20	4	1:24	2	2:30	3
C62	Day	3:04	9	1:59	11	1:20	4
	Night	3:06	5	2:17	5	2:33	6
P16	Day	1:51	21	2:08	20	1:39	23
	Night	2:14	8	2:12	6	2:18	9
EMS17	Day	1:46	48	1:48	28	1:57	36
	Night	2:01	8	1:59	5	2:36	13
P17	Day	1:50	35	1:44	29	1:54	25
	Night	2:56	9	2:16	4	2:35	10



KCKFD MONTHLY ACTIVITY REPORT / MAY 2019

Battalion 3

		1st		2nd		3rd	
EMS2	Day	1:35	75	1:30	62	1:40	64
	Night	2:27	20	2:37	17	2:44	17
Q2	Day	1:26	72	1:26	56	2:09	69
	Night	2:12	18	2:42	17	3:53	25
P4	Day	1:44	37	2:07	30	1:36	37
	Night	2:56	6	1:47	12	2:30	11
EMS6	Day	1:15	51	1:41	50	2:05	39
	Night	2:51	16	2:54	18	2:58	15
Q6	Day	1:40	38	1:47	26	1:38	31
	Night	4:10	13	2:06	9	2:05	10
P8	Day	1:43	23	2:21	18	1:28	5
	Night	1:55	3	2:00	6	1:54	3
EMS18	Day	1:28	72	1:58	63	1:57	64
	Night	2:12	16	2:34	19	2:40	22
P18	Day	1:18	56	1:23	60	1:46	56
	Night	1:53	13	1:58	15	2:20	20
EMS19	Day	1:39	63	1:24	55	1:37	68
	Night	2:25	17	2:33	20	2:41	25
P19	Day	1:34	64	1:29	49	1:28	65
	Night	2:17	19	2:46	18	2:12	18
C63	Day	1:25	27	1:26	20	1:28	17
	Night	3:33	6	1:00	1	2:14	4
P20	Day	1:39	26	1:11	24	1:53	27
	Night	2:56	6	1:47	12	2:30	11



Time is critical in our business. It is easy to explain the time factor when we are responding to a structure fire. Lives often depend on our ability to get emergency responders on scene. Time is just a critical when we are responding to an emergency medical call. The American Heart Association shows very clearly the relationship between the time elapsed from out of hospital cardiac arrest to the arrival of advanced medical care. The National Fire Protection Association (NFPA) and the Center for Fire Accreditation International (CFAI) have developed industry standards and methods for gathering and interpreting this data.

KCKFD is gathering and sharing specific response time data in an effort to improve our service delivery and better serve our community. KCKFD is using FirstWatch Data Analytics to analyze our raw data and help us show our frontline personnel how they are performing.

NFPA 1710 identifies three time benchmarks:

Call receipt and processing time;

90% of the time, 60 seconds from receipt of call, including transfer time

Turnout time:

90% of the time, 60 seconds from the company level initial receipt of dispatch to the beginning of response time (wheels turning)

Response time

The time that begins when responding units are en route to the emergency incident (wheels rolling), and ends when responding units arrive on scene (wheels stopped at the address).

There are slight differences between Fire and EMS Response:

Deployment (Fire)

- Arrival of engine company in four minutes (240 seconds) and/or the full initial alarm assignment within eight minutes (480 seconds)
- Initial full alarm assignment meeting eight-minute (480- second) response time objective on 90% of all emergency incidents including an arriving company capability to implement an Initial Rapid Intervention Crew (IRIC)

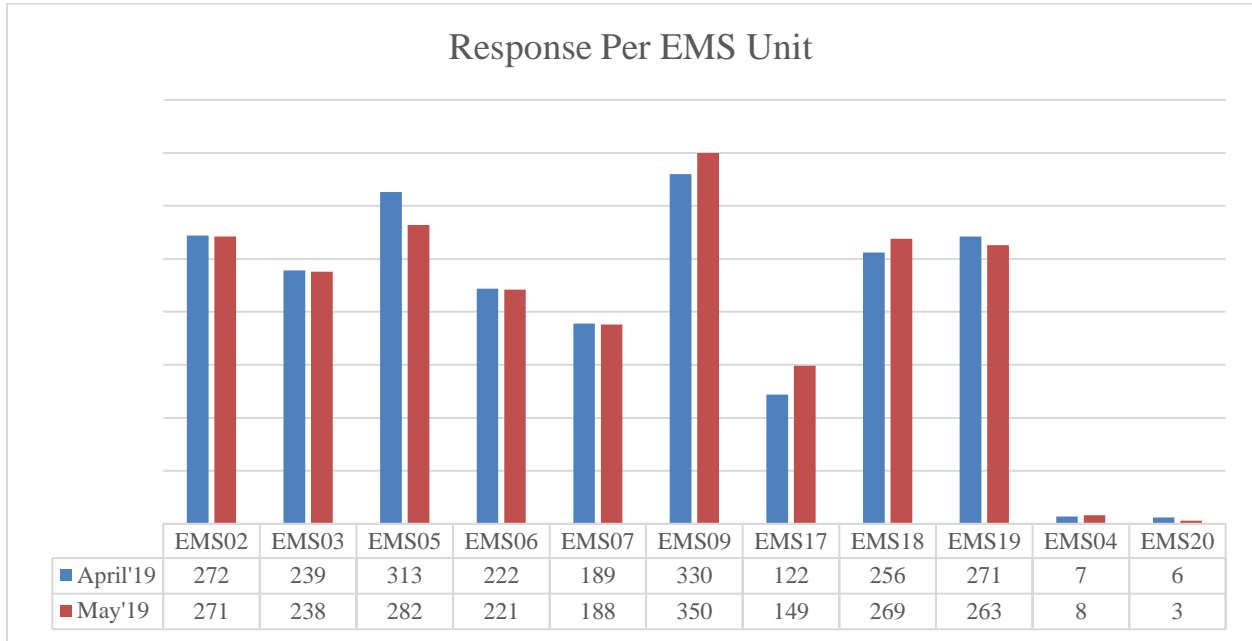
Deployment (EMS)

- Turnout of personnel for response within one minute (60 seconds)
- First responder/AED level, within four-minute (240- second) response on 90% of all emergency medical incidents
- ALS response within eight minutes (480 seconds) on 90% of all ALS calls
- ALS response, two members at EMT-P level and two members at EMT-B level arriving on scene within the established response time

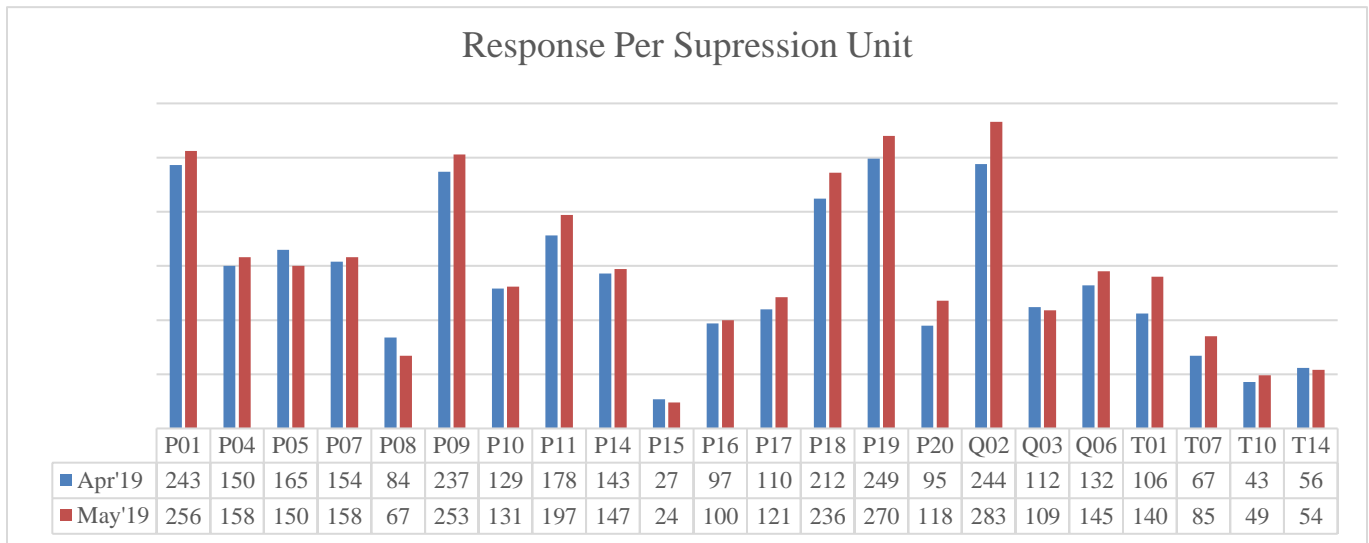


KCKFD MONTHLY ACTIVITY REPORT / MAY 2019

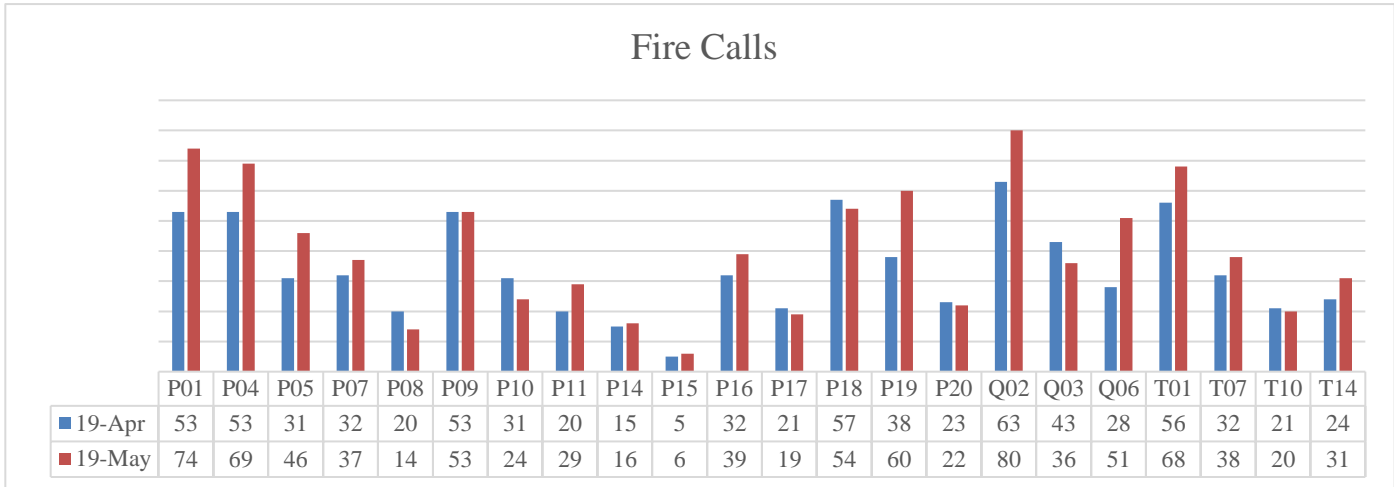
The Kansas City Kansas Department responded to **2702** incidents during the month of May 2019 based on CAD and NFIRS data.



KCKFD EMS Units responded to an incident 2242 times in May 2019, 2227 times in April 2019 and 2379 times in May of 2018. This number is generated by CAD and NFIRS data. If more than one unit responded, each unit is counted as a response, however the incident is counted only once for our total response count.



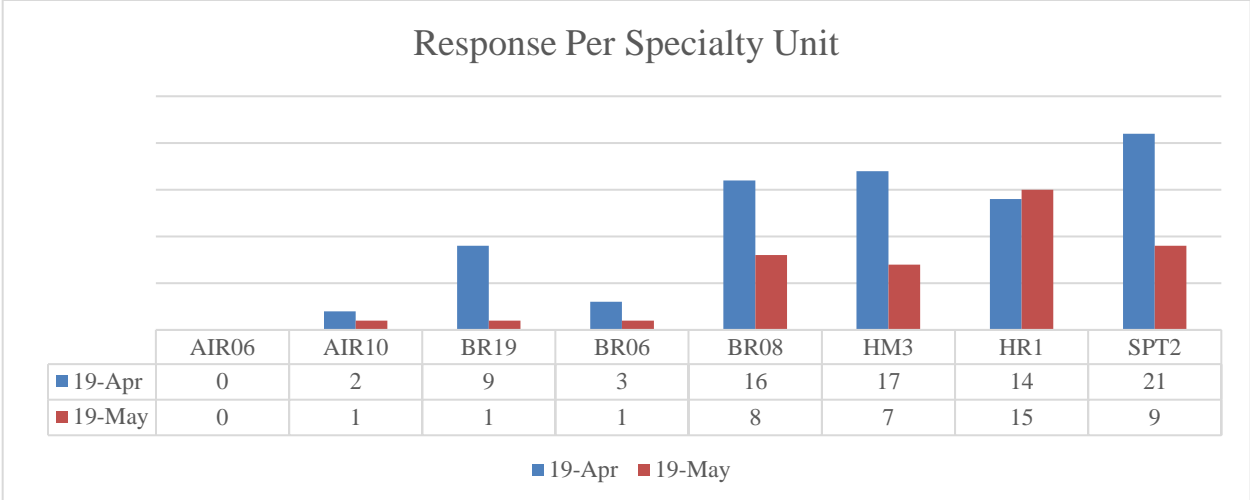
KCKFD Suppression Units responded to an incident 3251 times in May 2019 and 3033 times in April of 2019.



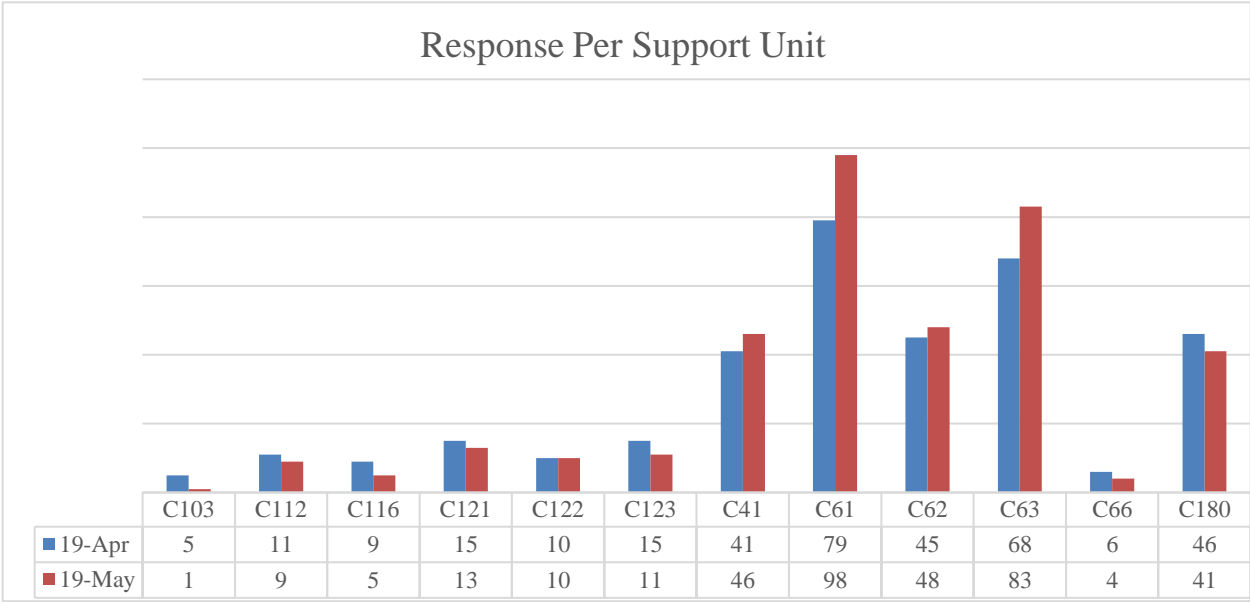
KCKFD Suppression Units responded to a Fire call 886 time in May of 2019. In April of 2019 we responded to 751 Fire calls. In May of 2018 we responded to 818 Fire calls.

This number is generated CAD and NFIRS data. These calls include:

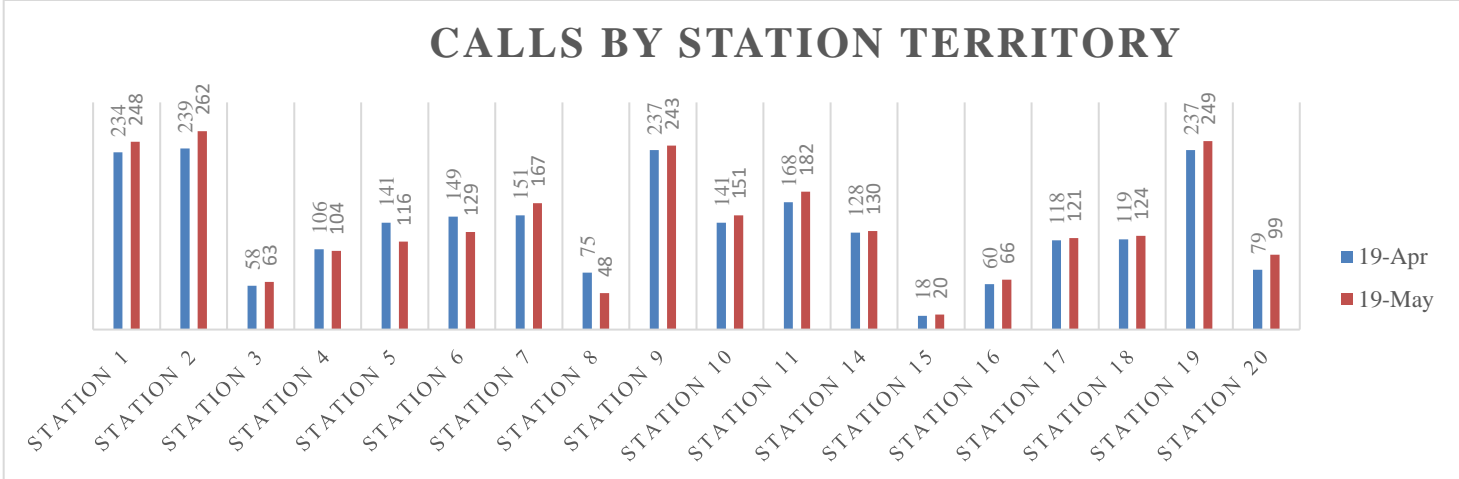
- F A/A Business/ Multi Family - F A/A Business/ Multi Family
- F A/A Residence - F A/A Residence
- F Business/ Multi Family Fire - F Business/ Multi Family Fire
- F Controlled Burning - F Controlled Burning
- F Family Dwelling Fire - F Family Dwelling Fire
- F Fire Outside Structure - F Fire Outside Structure
- F Fire/ Explosion Unclassified - F Fire/ Explosion Unclassified
- F Rekindle - F Rekindle
- F Smoke/ Odor Removal - F Smoke/ Odor Removal
- F Spill/ Leak- No Fire - F Spill/ Leak- No Fire
- F Trees/Brush/Grass Fire - F Trees/Brush/Grass Fire
- F Unauthorized Burning - F Unauthorized Burning
- F Vehicle Fire - F Vehicle Fire
- F Vicinity Alarm - F Vicinity Alarm
- Fire - Fire Residential
- Fire Brush Truck - Fire Brush Truck
- Fire Car - Fire Car
- Fire UTV - Fire Utility Vehicle



KCKFD Specialty Units responded to an incident 42 times in May 2019 and 93 times in April 2019. This number is generated by CAD and NFIRS data. If more than one unit responded, each unit is counted as a response, however the incident is counted only once for our total response count.



KCKFD SUPPORT Units responded to an incident 392 times in May 2019 and 373 times in April 2019. This number is generated by CAD and NFIRS data. If more than one unit responded, each unit is counted as a response, however the incident is counted only once for our total response count. Many of our chief officers respond to incidents, they will be included in the monthly report if their responses are of note.



Calls by station territory are determined by first due territory response. Apparatus often respond to incidents in first due territory other than their own. For example: If Pumper 20 responds to an incident in Pumper 19's first due territory, the activity will be reflected in Pumper 20's Response per Suppression Unit but in Station 19's Response by Station Territory. Note: The 171 non-emergency transfers from PMC and KUMC, which elevate the data for Station 10 and Station 19, have been removed from the above table. Non-emergency transfers count only for the EMS Unit that completed the transfer. We responded on Mutual Aid 5 times to Bonner Springs and once to Linwood.

Incident Types

100 Fire, other	5
111 Building fire	8
112 Fires in structure other than in a building	1
130 Mobile property (vehicle) fire, other	1
131 Passenger vehicle fire	7
133 Rail vehicle fire	1
150 Outside rubbish fire, other	1
151 Outside rubbish, trash or waste fire	6
154 Dumpster or other outside trash receptacle fire	1
210 Overpressure rupture from steam, other	1
221 Overpressure rupture of air or gas pipe/pipeline	1
243 Fireworks explosion (no fire)	1
300 Rescue, EMS incident, other	7
311 Medical assist, assist EMS crew	21
321 EMS call, includes calls where	1,211
3211 EMS Refusal	147
3212 EMS call No EMS needed	240
3213 Non Emergency Transfer	171
322 Motor vehicle accident with injuries	54
3221 MVA with refusal	19



KCKFD MONTHLY ACTIVITY REPORT / MAY 2019

323 Motor vehicle/pedestrian accident (MV Ped)	5
324 Motor vehicle accident with no injuries.	29
331 Lock-in (if lock out , use 511)	2
353 Removal of victim(s) from stalled elevator	1
363 Swift water rescue	1
381 Rescue or EMS standby	9
3811 Tactical Medic standby	2
411 Gasoline or other flammable liquid spill	5
412 Gas leak (natural gas or LPG)	14
422 Chemical spill or leak	1
424 Carbon monoxide incident	1
440 Electrical wiring/equipment problem, other	3
441 Heat from short circuit (wiring), defective/worn	1
444 Power line down	19
4441 Utility lines down, not power	4
445 Arcing, shorted electrical equipment	17
451 Biological hazard, confirmed or suspected	1
481 Attempt to burn	1
500 Service Call, other	8
511 Lock-out	2
512 Ring or jewelry removal	1
531 Smoke or odor removal	2
541 Animal problem	1
542 Animal rescue	2
550 Public service assistance, other	14
551 Assist police or other governmental agency	4
552 Police matter	13
553 Public service	15
5531 Public Relations	1
554 Assist invalid	110
555 Defective elevator, no occupants	1
561 Unauthorized burning	24
571 Cover assignment, standby, moveup	1
600 Good intent call, other	2
611 Dispatched & canceled en route	147
621 Wrong location	1
622 No incident found on arrival at dispatch address	51
650 Steam, other gas mistaken for smoke, other	1
651 Smoke scare, odor of smoke	23
652 Steam, vapor, fog or dust thought to be smoke	1
653 Smoke from barbecue, tar kettle	1
661 EMS call, party transported by non-fire agency	2
671 HazMat release investigation w/no HazMat	8



KCKFD MONTHLY ACTIVITY REPORT / MAY 2019

700 False alarm or false call, other	17
712 Direct tie to FD, malicious false alarm	1
715 Local alarm system, malicious false alarm	4
730 System malfunction, other	2
731 Sprinkler activation due to malfunction	2
732 Extinguishing system malfunction (activation)	1
733 Smoke detector activation due to malfunction	9
735 Alarm system sounded due to malfunction	16
736 CO detector activation due to malfunction	6
740 Unintentional transmission of alarm, other	7
743 Food on the stove/steam/cigarette smoke Automatic Fire Alarm	102
744 Detector activation, no fire - unintentional	3
745 Alarm system activation, no fire - unintentional	27
746 Carbon monoxide detector activation, no CO	5
812 Flood assessment	1
814 Lightning strike (no fire)	2
900 Special type of incident, other	1
Unknown	42

SMOKE DETECTOR INSTALLATIONS

In May 2019 KCKFD Crews installed 15 smoke detectors in 6 residences.

1st Shift

Truck 7

2nd Shift

Pumper 11

3rd Shift

Truck 1
Pumper 18

***40 hour employees installed smoke detectors in 2 residences
KCKFD crews have installed 45 smoke detectors in 2019.***



MAY PulsePoint

	April 19'	May 19'
	KCKFD	KCKFD
Total number of followers	4597	4863
Total number of followers with CPR alerts enabled	2684	2815
SCA incidents	14	22
SCA incidents in public location	4	2
CPR Alerts sent	0	1
Number of devices alerted to CPR needed events	0	9
Total number of incident notifications	158	151
Total number of incidents appearing in PulsePoint	2253	2244
Followers by notification type (EOM August 2017)		
Structure Fire notifications enabled	1350	1391
Working Structure Fire notifications enabled	1281	1315
Vegetation Fire notifications enabled	443	454
Working Vegetation Fire notifications enabled	450	466
Traffic Collision notifications enabled	835	862
Traffic Collision Expanded notifications enabled	856	880
Technical Rescue notifications enabled	364	376
Hazmat Response notifications enabled	726	752
Water Rescue notifications enabled	397	418
NEWS notifications enabled	574	607
CERT notifications enabled	486	510
DISASTER notifications enabled	893	920



KCKFD MONTHLY ACTIVITY REPORT / MAY 2019

Transports:

May 2019	1643	KU Med	604	2519YTD
April 2019	1421	PMC	296	1233YTD
Mar 2018	1384	SMMC	161	517YTD
		TMC-HH	56	
		CMH	35	

May 2019 Runs by Hour of Day

Incident Hour Range Of Day 24	Number of Runs
00:00:00 - 00:59:59	37
01:00:00 - 01:59:59	34
02:00:00 - 02:59:59	30
03:00:00 - 03:59:59	31
04:00:00 - 04:59:59	27
05:00:00 - 05:59:59	36
06:00:00 - 06:59:59	37
07:00:00 - 07:59:59	52
08:00:00 - 08:59:59	62
09:00:00 - 09:59:59	92
10:00:00 - 10:59:59	91
11:00:00 - 11:59:59	70
12:00:00 - 12:59:59	114
13:00:00 - 13:59:59	79
14:00:00 - 14:59:59	101
15:00:00 - 15:59:59	94
16:00:00 - 16:59:59	98
17:00:00 - 17:59:59	96
18:00:00 - 18:59:59	89
19:00:00 - 19:59:59	79
20:00:00 - 20:59:59	86
21:00:00 - 21:59:59	67
22:00:00 - 22:59:59	76
23:00:00 - 23:59:59	65
Total: 1,643	



May 2019 Runs by Day of Week

Incident Day Name	Number of Runs
Sunday	217
Monday	190
Tuesday	202
Wednesday	279
Thursday	263
Friday	270
Saturday	222
	Total: 1,643

May 2019 Runs by Provider Impression

Situation Provider Primary Impression (eSituation.11)	Number of Runs
Acute abdomen discomfort pain (R10.0)	99
no complaints or findings; Adult, Encounter, (Z00.00)	93
Acute pain, not elsewhere classified (G89.1)	87
ALOC Altered mental status unspecified etiology (R41.82)	73
Weakness (R53.1)	69
Behavioral/Psychiatric Disorder (F99)	67
Chest pain Angina (I20.9)	48
Trauma Injury of head (S09.90)	47
Chest Pain, Other (non-cardiac) (R07.89)	38
	37
Seizures without status epilepticus (G40.909)	36
Back pain non traumatic (M54.9)	33
Dizziness or light-headedness or vertigo (R42)	32
Nausea and vomiting (R11)	29
Syncope and collapse (R55)	28
Anxiety (F41.9)	27
Respiratory COPD with exacerbation (J44.1)	27
Trauma injuries multi-system unspecified (T14.90)	25
Suicidal ideations (R45.851)	24
Respiratory disorder, unspecified (J98.9)	23



KCKFD MONTHLY ACTIVITY REPORT / MAY 2019

Situation Provider Primary Impression (eSituation.11)	Number of Runs
Respiratory distress, acute (J80)	23
Trauma Injury of face (S09.93)	23
Alcohol use, unspecified with intoxication (F10.92)	22
Respiratory Asthma with exacerbation (J45.901)	21
Trauma Injury of neck (S19.9)	21
Hypoglycemia - Diabetes (E13.64)	20
Trauma Injury of wrist, hand and finger(s) (S69.9)	19
Headache (R51)	18
Poisoning, drugs, medication, or other Intentional (T50.902)	18
Acute Stroke suspected (I63.9)	17
Trauma Injury of lower leg (S89.9)	17
Cardiac arrest (I46.9)	15
Bedridden (Z74.01)	14
Generalized abdomen pain (R10.84)	14
Trauma Injury of hip (S79.91)	14
Hypertension (I10)	13
Sepsis (A41.9)	13
Trauma Injury of forearm (S59.91)	13
Alcohol use, unspecified (F10.9)	12
Trauma Injury of lower back (S39.92)	12
Allergic Reaction (T78.40)	11
Other reduced mobility (Z74.09)	11
Trauma Injury of foot (S99.92)	11
Trauma Injury of shoulder and upper arm (S49.9)	11
Chronic pain, not elsewhere classified (G89.2)	10
Malaise (R53.81)	10
no complaints or findings; Child, Encounter, (Z00.129)	10
Other mechanical complication of other specified internal prosthetic devices, implants and grafts (T85.698)	10
Unspecified infectious disease (B99.9)	10
Cardiac arrest- Obvious Death (I46)	9
Fever (R50.9)	9
Trauma Injury of ankle (S99.91)	9



KCKFD MONTHLY ACTIVITY REPORT / MAY 2019

Situation Provider Primary Impression (eSituation.11)	Number of Runs
Trauma Injury of thorax (upper chest) (S29.9)	9
Hyperglycemia - Diabetes (E13.65)	8
OB - Pregnancy with contractions (O62.0)	8
OB - Uterine or vaginal bleeding, abnormal (includes suspected miscarriage) (N93.9)	8
Opioid related disorders - drugs (F11)	8
CHF (I50.9)	7
Other disorders of electrolyte and fluid balance, not elsewhere classified (E87.8)	7
Trauma Injury of abdomen (S39.91)	7
Vomiting, unspecified (R11.10)	7
Chest Pain Angina, unstable (I20.0)	6
Chest pain or ACS Non-ST elevation (NSTEMI) myocardial infarction (I21.4)	6
Diarrhea (K59.1)	6
Epistaxis (R04.0)	6
Hypotension (I95.9)	6
Melena Lower gastrointestinal bleeding (K92.1)	6
Suicide attempt (T14.91)	6
Cardiac arrhythmia/dysrhythmia (I49.9)	5
Chest pain or ACS ST elevation (STEMI) myocardial infarction of anterior wall (I21.0)	5
Dehydration (E86.0)	5
Nonspecific Stimulant/Inhalant Disorders - drug (F15)	5
Obvious Death (R99)	5
Psychoactive substance related disorders, other - drugs (F19)	5
Seizures with status epilepticus (G40.901)	5
Trauma Injury of eye and orbit (S05)	5
Constipation (K59.00)	4
Episode(s) of Chest pain / intermittent chest discomfort (R07.9)	4
Hematemesis - vomiting blood (K92.0)	4
Poisoning, drugs, medication, or other Unintentional (T50.901)	4
TIA (G45.9)	4
Trauma Injury of thigh (upper leg) (S79.92)	4



Situation Provider Primary Impression (eSituation.11)	Number of Runs
Cancer, unspecified (D49)	3
Common Cold (J00)	3
Kidney (Renal) Failure (N17.8)	3
Palliative care/ hospice care (Z51.5)	3
Pelvic and perineal pain (R10.2)	3
Respiratory Acute bronchitis, unspecified (J20.9)	3
Respiratory Acute bronchospasm (J98.01)	3
Respiratory Pneumonia, unspecified (J18.9)	3
Trauma injury Burn, unspecified location and degree (T30.0)	3
Trauma Injury of external genitals (S39.94)	3
Trauma Injury of pelvis (S39.93)	3
Alcohol dependence w/ withdrawal, unspecified (F10.239)	2
Chest pain or ACS ST elevation (STEMI) myocardial infarction of inferior wall (I21.1)	2
Foreign body in genitourinary tract, part unspecified (T19.9)	2
Hallucinogen related disorders (F16)	2
Hypoglycemia, unspecified (E16.2)	2
Migraine (G43.9)	2
Pre-eclampsia (O14.9)	2
Respiratory Foreign body in respiratory tract, part unspecified, choking, aspiration (T17.9)	2
Respiratory Pulmonary embolism suspected (I26)	2
Cold injury/ies (P80.0)	1
Concussion without loss of consciousness (S06.0X0A)	1
Hyperkalemia (E87.5)	1
Leakage of vascular dialysis catheter, shunt, or port (T82.43)	1
Not Applicable	1
OB - Vomiting due to pregnancy (O21.9)	1
Obesity, unspecified (E66.9)	1
Quadriplegia (G82.50)	1
Respiratory condition due to chemicals, gases, fumes and vapors (J68.9)	1
Respiratory failure, unspecified (J96.9)	1
Suspected exposure (Z77.9)	1
Trauma Injury of ear (S09.91)	1



Situation Provider Primary Impression (eSituation.11)	Number of Runs
Trauma Injury of elbow (S59.90)	1
Trauma Injury of nose (S09.92)	1
Unspecified visual disturbance (H53.9)	1
Total: 1,643	

May 2019 Runs by Dispatch Reason

Incident Complaint Reported By Dispatch (eDispatch.01)
Number of Runs: 312
Sick Person
Number of Runs: 191
Transfer/Interfacility/Palliative Care
Number of Runs: 157
Breathing Problem
Number of Runs: 138
Traffic/Transportation Incident
Number of Runs: 115
Unknown Problem/Person Down
Number of Runs: 106
Chest Pain (Non-Traumatic)
Number of Runs: 76
Falls
Number of Runs: 71
Psychiatric Problem/Abnormal Behavior/Suicide Attempt
Number of Runs: 54
Unconscious/Fainting/Near-Fainting
Number of Runs: 48
Convulsions/Seizure
Hemorrhage/Laceration
Number of Runs: 38
Abdominal Pain/Problems
Number of Runs: 32
Assault
Diabetic Problem



Incident Complaint Reported By Dispatch (eDispatch.01)
Heart Problems/AICD
Stroke/CVA
Number of Runs: 30
Cardiac Arrest/Death
Number of Runs: 28
Traumatic Injury
Number of Runs: 23
Overdose/Poisoning/Ingestion
Number of Runs: 16
Back Pain (Non-Traumatic)
Pregnancy/Childbirth/Miscarriage
Number of Runs: 15
Stab/Gunshot Wound/Penetrating Trauma
Number of Runs: 9
Allergic Reaction/Stings
Number of Runs: 7
Headache
Number of Runs: 4
Number of Runs: 3
Animal Bite
Heat/Cold Exposure
Number of Runs: 2
Choking
No Other Appropriate Choice

Thanks for all you do to serve and protect our community!