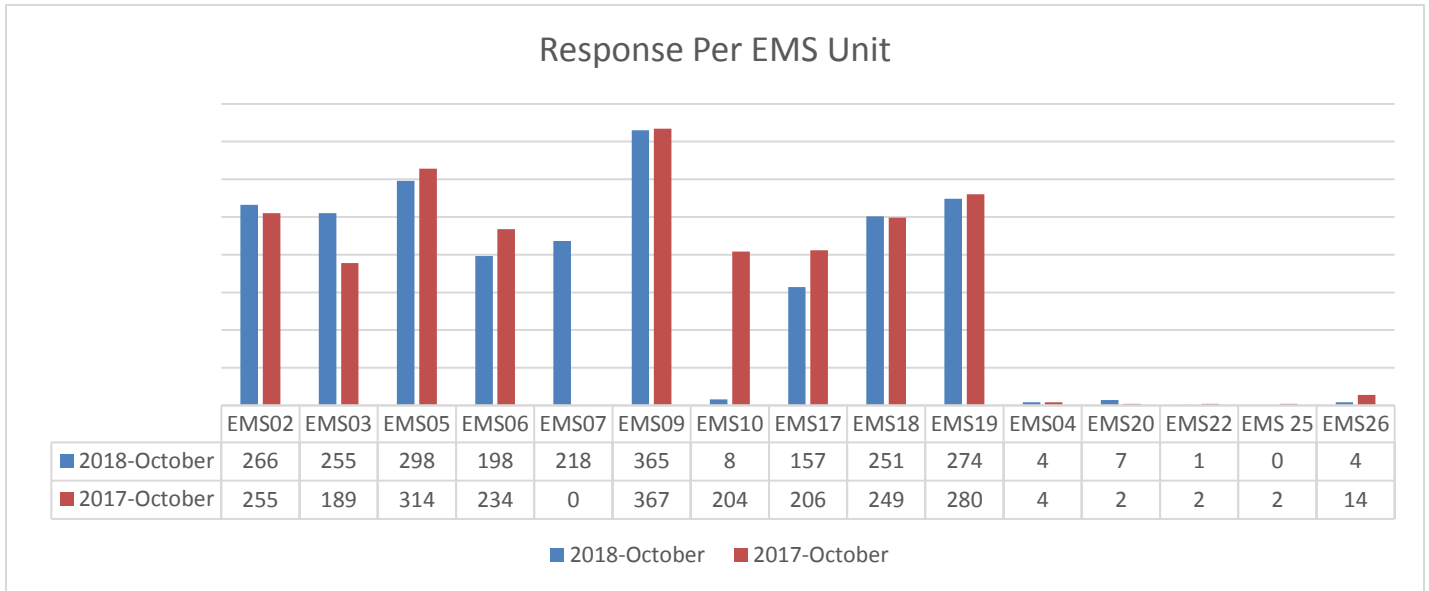
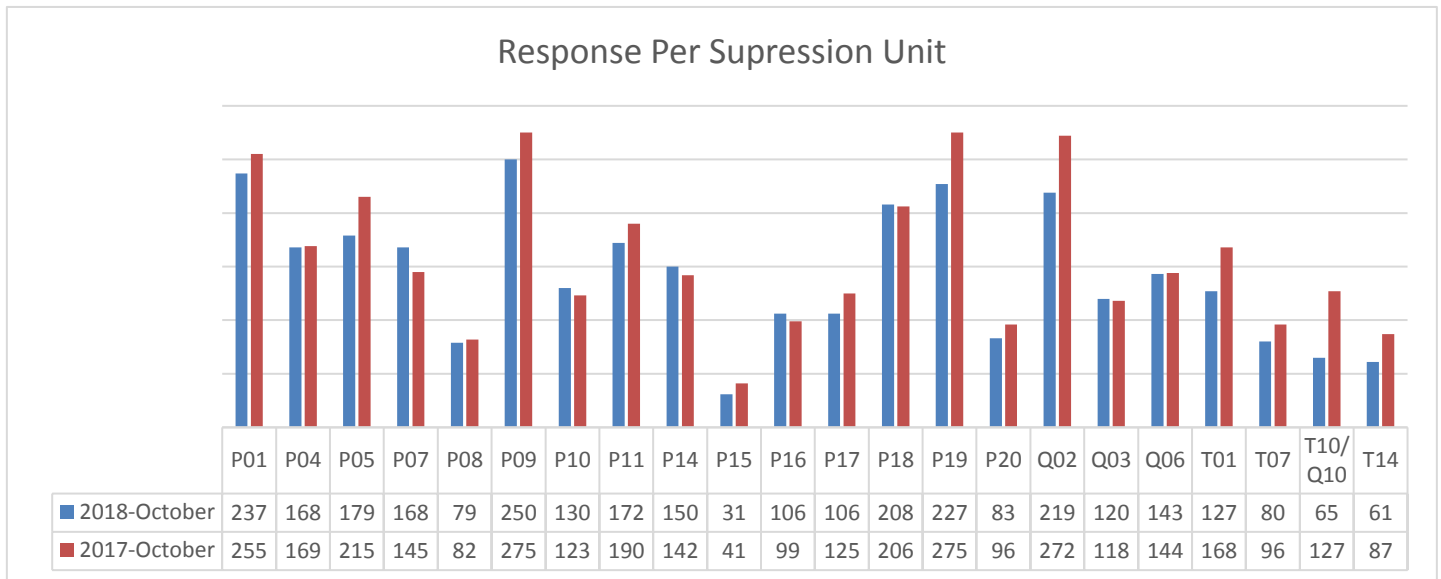




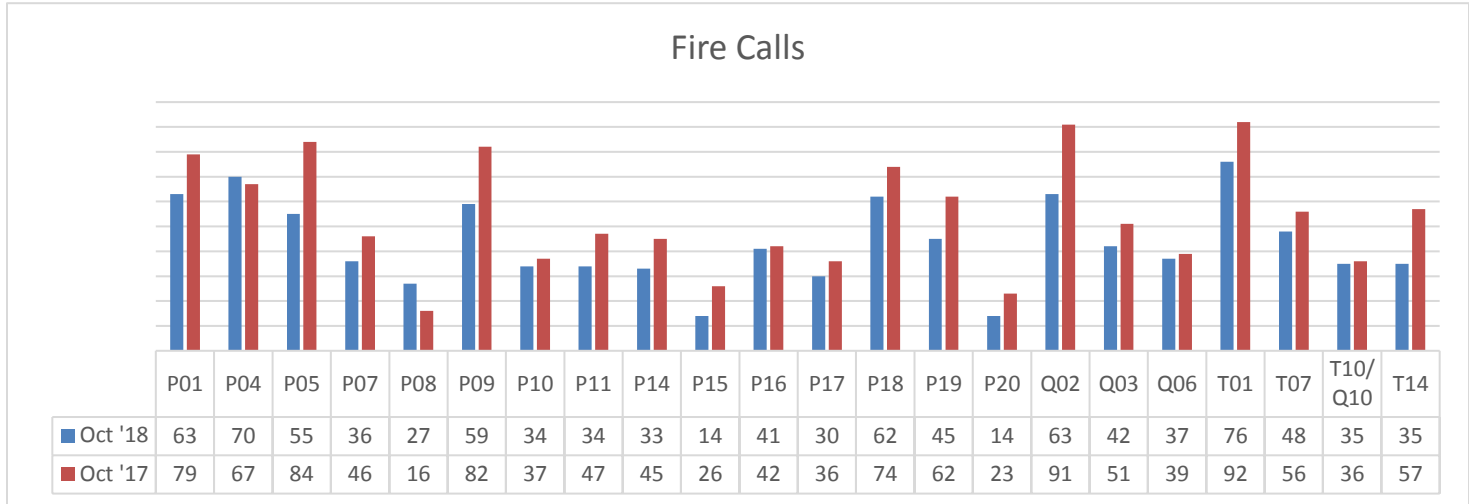
The Kansas City Kansas Department responded to 2661 incidents during the month of October 2018 based on CAD and NFIRS data.



KCKFD EMS Units responded to an incident 2130 times in October 2018, 2448 times in September 2018 and 2193 times in October of 2017. This number is generated by CAD and NFIRS data. If more than one unit responded, each unit is counted as a response, however the incident is counted only once for our total response count.



KCKFD Suppression Units responded to an incident 3109 times in October 2018 and 3362 times in September of 2018. In October of 2017 we responded to 3450 incidents. This number is generated by CAD and NFIRS data. If more than one unit responded, each unit is counted as a response, however the incident is counted only once for our total response count.



KCKFD Suppression Units responded to a Fire call 953 times in October 2018. In October of 2017 we responded to 1188 Fire calls. This number is generated CAD and NFIRS data. These calls include:

- F A/A Business/ Multi Family - F A/A Business/ Multi Family
- F A/A Residence - F A/A Residence
- F Business/ Multi Family Fire - F Business/ Multi Family Fire
- F Family Dwelling Fire - F Family Dwelling Fire
- F Service Call Unclassified - F Service Call Unclassified
- F Steam Rupture - F Steam Rupture
- F Trees/Brush/Grass Fire - F Trees/Brush/Grass Fire
- F Vehicle Fire - F Vehicle Fire
- F Steam Rupture - F Steam Rupture
- F Vicinity Alarm - F Vicinity Alarm
- Fire - Fire Residential
- Fire Car - Fire Car
- F Controlled Burning - F Controlled Burning
- Fire Brush Truck - Fire Brush Truck
- F Smoke/ Odor Removal - F Smoke/ Odor Removal
- F Arcing Electrical - F Arcing Electrical
- F Hazardous condition - F Hazardous Condition
- F Spill/ Leak- No Fire - F Spill/ Leak- No Fire
- F Trees/Brush/Grass Fire - F Trees/Brush/Grass Fire
- F Unauthorized Burning - F Unauthorized Burning

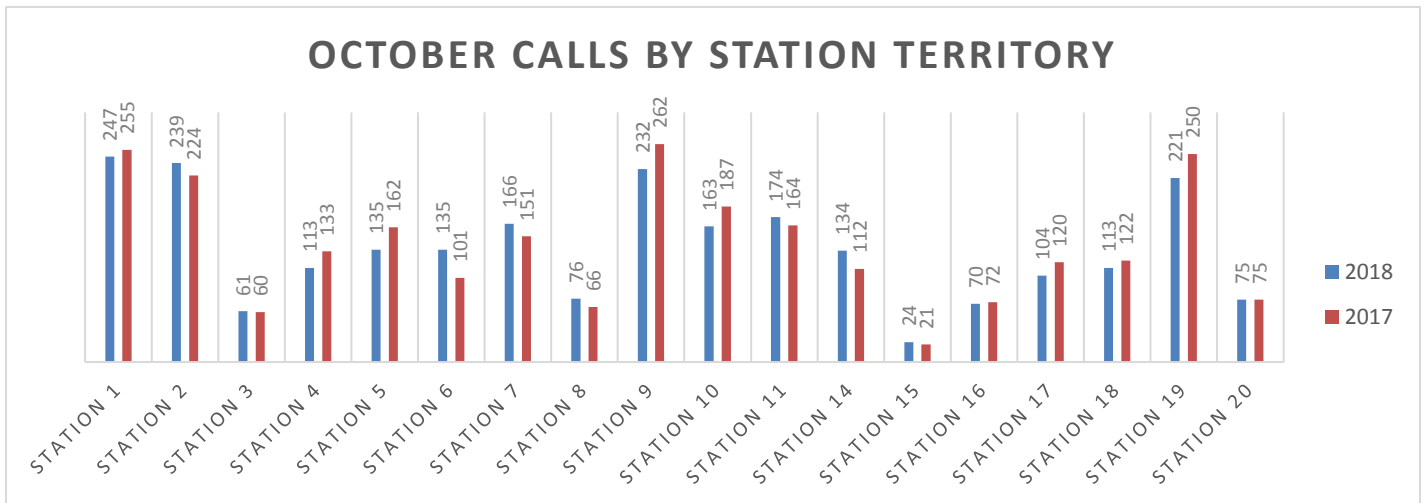


October 2018 / Response Per Specialty/Support Unit



KCKFD Support/Specialty Units responded to an incident 440 times in October 2018, 432 times in September 2018, and 559 times in September of 2017. This number is generated by CAD and NFIRS data. If more than one unit responded, each unit is counted as a response, however the incident is counted only once for our total response count.

OCTOBER CALLS BY STATION TERRITORY



Calls by station territory are determined by first due territory response. Apparatus often respond to incidents in first due territory other than their own. For example: If Pumper 20 responds to an incident in Pumper 19's first due territory, the activity will be reflected in Pumper 20's Response per Suppression Unit but in Station 19's Response by Station Territory. Note: The non-emergency transfers from PMC and KUMC, which elevated the data for Station 10 and Station 19, has been removed from the above table. 171 non-emergency transfers counted only in the EMS Unit that completed the transfer. There is 1 call not reflected on this graph. We responded on Mutual Aid, 4 times to Bonner Springs and twice to Edwardsville.

**Incident Types**

111 Building fire	11	11
112 Fires in structure other than in a building	1	1
113 Cooking fire, confined to container	1	1
116 Fuel burner/boiler malfunction, fire confined	1	1
118 Trash or rubbish fire, contained	1	1
131 Passenger vehicle fire	3	3
132 Road freight or transport vehicle fire	1	1
140 Natural vegetation fire, other	1	1
142 Brush or brush-and-grass mixture fire	1	1
143 Grass fire	2	2
150 Outside rubbish fire, other	3	3
151 Outside rubbish, trash or waste fire	16	16
154 Dumpster or other outside trash receptacle fire	2	2
162 Outside equipment fire	2	2
300 Rescue, EMS incident, other	9	9
311 Medical assist, assist EMS crew	28	28
321 EMS call, includes calls where	1,271	1,270
3211 EMS Refusal	125	125
3212 EMS call No EMS needed	222	222
3213 Non Emergency Transfer	171	171
322 Motor vehicle accident with injuries	38	38
3221 MVA with refusal	16	16
323 Motor vehicle/pedestrian accident (MV Ped)	7	7
324 Motor vehicle accident with no injuries.	37	37
331 Lock-in (if lock out , use 511)	2	2
342 Search for person in water	3	3
353 Removal of victim(s) from stalled elevator	5	5
363 Swift water rescue	1	1
381 Rescue or EMS standby	10	10
3811 Tactical Medic standby	2	2
400 Hazardous condition, other	2	2
411 Gasoline or other flammable liquid spill	1	1
412 Gas leak (natural gas or LPG)	14	14
424 Carbon monoxide incident	6	6
440 Electrical wiring/equipment problem, other	2	2
441 Heat from short circuit (wiring), defective/worn	2	2
444 Power line down	6	6
445 Arcing, shorted electrical equipment	4	4
460 Accident, potential accident, other	1	1
500 Service Call, other	7	7



511 Lock-out	7	7
522 Water or steam leak	2	2
531 Smoke or odor removal	3	3
550 Public service assistance, other	13	13
551 Assist police or other governmental agency	7	7
552 Police matter	13	13
553 Public service	14	14
554 Assist invalid	115	115
561 Unauthorized burning	22	22
600 Good intent call, other	1	1
611 Dispatched & canceled en route	159	159
621 Wrong location	5	5
622 No incident found on arrival at dispatch address	49	49
631 Authorized controlled burning	7	7
650 Steam, other gas mistaken for smoke, other	1	1
651 Smoke scare, odor of smoke	16	16
652 Steam, vapor, fog or dust thought to be smoke	5	5
671 HazMat release investigation w/no HazMat	3	3
672 Biological hazard investigation, none found	1	1
700 False alarm or false call, other	29	29
710 Malicious, mischievous false call, other	2	2
712 Direct tie to FD, malicious false alarm	1	1
715 Local alarm system, malicious false alarm	2	2
730 System malfunction, other	3	3
733 Smoke detector activation due to malfunction	11	11
735 Alarm system sounded due to malfunction	13	13
736 CO detector activation due to malfunction	7	7
740 Unintentional transmission of alarm, other	3	3
741 Sprinkler activation, no fire - unintentional	1	1
743 Food on the stove/steam/cigarette smoke Automatic Fire Alarm	43	43
744 Detector activation, no fire - unintentional	7	7
745 Alarm system activation, no fire - unintentional	22	22
746 Carbon monoxide detector activation, no CO	3	3
900 Special type of incident, other	1	1
Unknown	33	33



NFIRS The Goal of the KCKFD is 100% completion for all NFIRS reporting.

Looks like we had 2,661 responses for October. We had an initial report completion percentage of 88.86%. (1st Shift was 87.03%, 2nd Shift was 90.89% and 3rd Shift was 88.69%)

There are still 91 reports that are either incomplete or haven't been started for the month which equals out to a 96.6% completion percentage after one notification.

There are still 40 reports that are still incomplete/unverified for the month of September.

We are current through August with the State Fire Marshal's Office
Each month's reports should be submitted to the state by the 20th of the next month.

EMS DIVISION

The following EMS data is drawn from incidents entered into Image Trend.

Transports	October	
TUKHS (KU)	622	YTD 6207
PMC (Providence)	349	YTD 3475
SMMC (Shawnee Msn)	188	
TMC-HH (Truman)	083	
CMH (Children's)	039	
Refusals	238	(and 4 N/A) for total of 236 non transport reports
Total	1611	
October 2018 Transports	1375	YTD 14518
October 2017 Transports	1459	YTD 14017

Oct 2018 Runs by Month:

January	1,705
February	1,459
March	1,672
April	1,585
May	1,852
June	1,774
July	1,756
August	1,822
September	1,742
October	1,611



Oct 2018 Runs by Hour of Day:

00:00:00 - 00:59:59	50	3.10%	12:00:00 - 12:59:59	90	5.59%
01:00:00 - 01:59:59	42	2.61%	13:00:00 - 13:59:59	99	6.15%
02:00:00 - 02:59:59	34	2.11%	14:00:00 - 14:59:59	101	6.27%
03:00:00 - 03:59:59	30	1.86%	15:00:00 - 15:59:59	91	5.65%
04:00:00 - 04:59:59	31	1.92%	16:00:00 - 16:59:59	101	6.27%
05:00:00 - 05:59:59	23	1.43%	17:00:00 - 17:59:59	68	4.22%
06:00:00 - 06:59:59	31	1.92%	18:00:00 - 18:59:59	90	5.59%
07:00:00 - 07:59:59	45	2.79%	19:00:00 - 19:59:59	102	6.33%
08:00:00 - 08:59:59	58	3.60%	20:00:00 - 20:59:59	77	4.78%
09:00:00 - 09:59:59	86	5.34%	21:00:00 - 21:59:59	72	4.47%
10:00:00 - 10:59:59	87	5.40%	22:00:00 - 22:59:59	71	4.41%
11:00:00 - 11:59:59	89	5.52%	23:00:00 - 23:59:59	43	2.67%
				EMS Total: 1,611	100.00%

Oct 2018 Runs by Day of Week:

Sunday	200	12.41%
Monday	266	16.51%
Tuesday	282	17.50%
Wednesday	261	16.20%
Thursday	201	12.48%
Friday	219	13.59%
Saturday	182	11.30%
Total: 1,611		Total: 100.00%

Oct 2018 Runs by Provider Impression:

ALOC Altered mental status unspecified etiology (R41.82)	97	6.02%
Acute pain, not elsewhere classified (G89.1)	77	4.78%
Weakness (R53.1)	76	4.72%
no complaints or findings; Adult, Encounter, (Z00.00)	73	4.53%
Acute abdomen discomfort pain (R10.0)	70	4.35%
Behavioral/Psychiatric Disorder (F99)	60	3.72%
Seizures without status epilepticus (G40.909)	59	3.66%
Chest pain Angina (I20.9)	56	3.48%
Back pain non traumatic (M54.9)	45	2.79%
Trauma Injury of head (S09.90)	42	2.61%
Dizziness or light-headedness or vertigo (R42)	34	2.11%
Suicidal ideations (R45.851)	32	1.99%
Respiratory distress, acute (J80)	31	1.92%
Respiratory COPD with exacerbation (J44.1)	30	1.86%
Syncope and collapse (R55)	30	1.86%
Nausea and vomiting (R11)	29	1.80%
Anxiety (F41.9)	28	1.74%



Chest Pain, Other (non-cardiac) (R07.89)	27	1.68%
Trauma injuries multi-system unspecified (T14.90)	26	1.61%
Trauma Injury of face (S09.93)	26	1.61%
Respiratory Asthma with exacerbation (J45.901)	25	1.55%
Respiratory disorder, unspecified (J98.9)	23	1.43%
	22	1.37%
Acute Stroke suspected (I63.9)	21	1.30%
Hyperglycemia - Diabetes (E13.65)	20	1.24%
Trauma Injury of lower leg (S89.9)	19	1.18%
Chronic pain, not elsewhere classified (G89.2)	18	1.12%
Headache (R51)	18	1.12%

Oct 2018 Runs by Dispatch Reason:

Sick Person	254	15.77%
Transfer/Interfacility/Palliative Care	190	11.79%
Breathing Problem	164	10.18%
Falls	127	7.88%
Traffic/Transportation Incident	98	6.08%
Convulsions/Seizure	87	5.40%
Chest Pain (Non-Traumatic)	80	4.97%
Unknown Problem/Person Down	76	4.72%
Unconscious/Fainting/Near-Fainting	63	3.91%
Psychiatric Problem/Abnormal Behavior/Suicide Attempt	52	3.23%
Diabetic Problem	47	2.92%
Overdose/Poisoning/Ingestion	44	2.73%
Hemorrhage/Laceration	43	2.67%
Assault	38	2.36%
Stroke/CVA	38	2.36%
Abdominal Pain/Problems	36	2.23%
Heart Problems/AICD	34	2.11%
Back Pain (Non-Traumatic)	28	1.74%
Cardiac Arrest/Death	25	1.55%
Traumatic Injury	18	1.12%
Stab/Gunshot Wound/Penetrating Trauma	15	0.93%
Allergic Reaction/Stings	14	0.87%
Pregnancy/Childbirth/Miscarriage	14	0.87%
Headache	10	0.62%



Oct 2018 Procedures Administered:

# of patients identified as meeting Trauma Routing Criteria (& transported HOT)	19
# of patients identified as meeting STEMI Routing Criteria	14
# of patients identified as meeting STROKE Routing Criteria	15