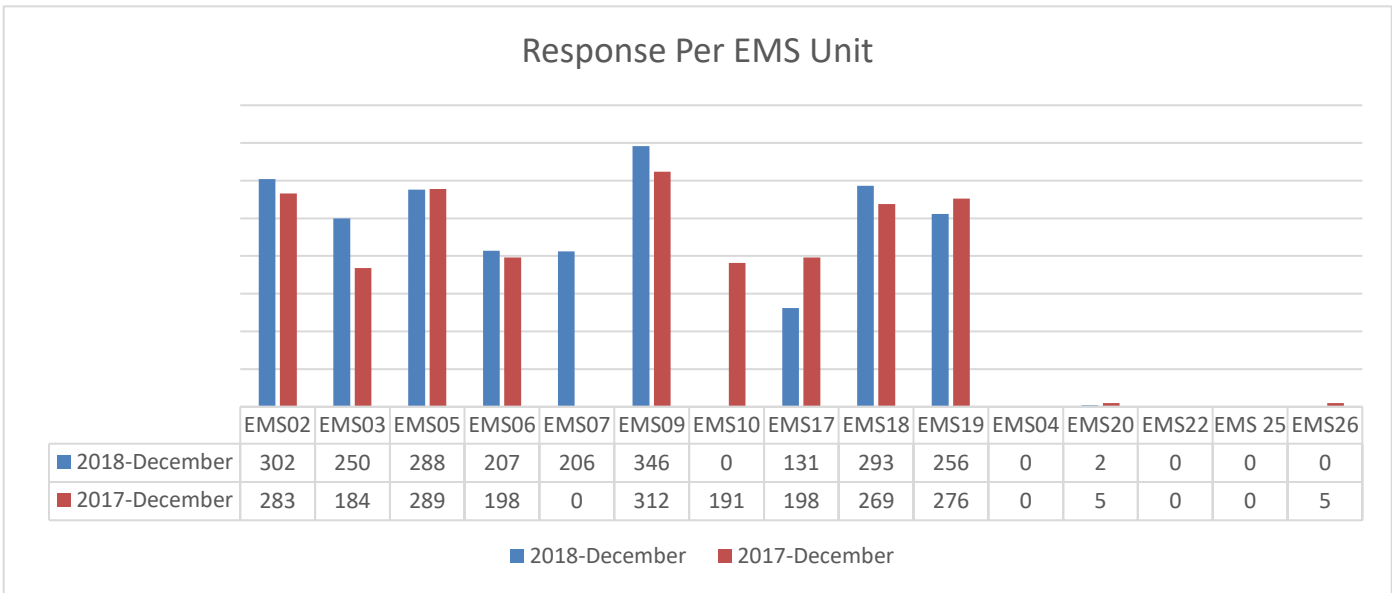
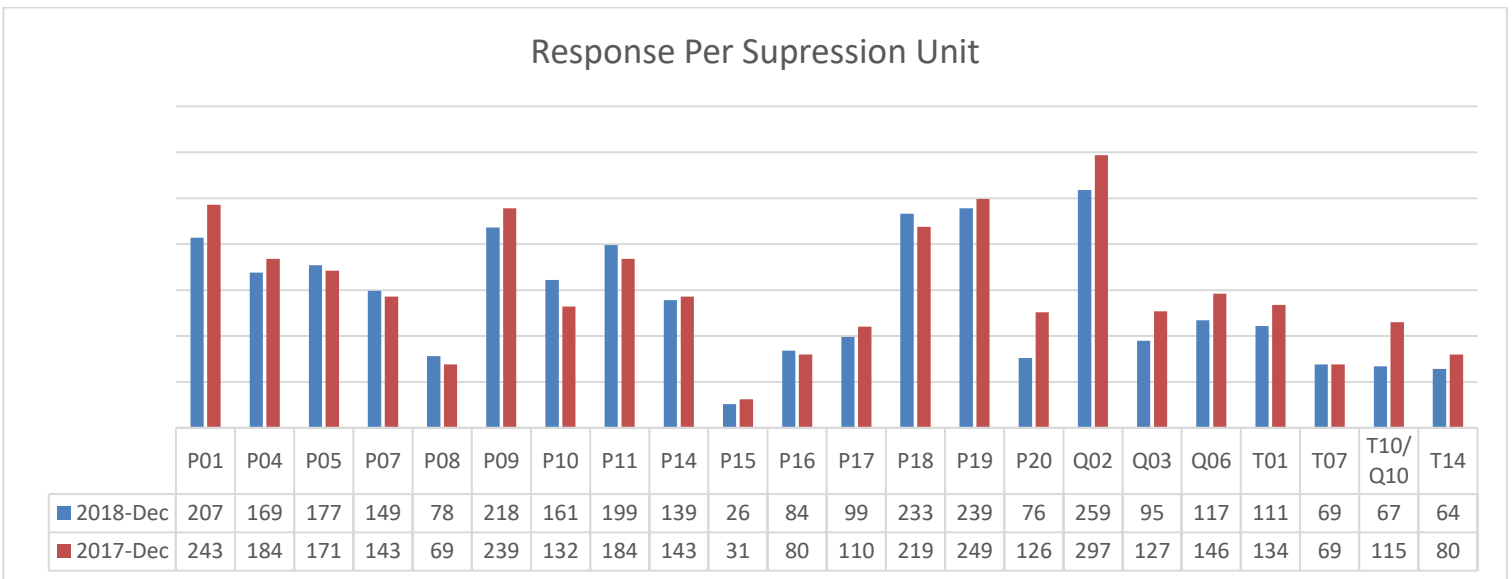




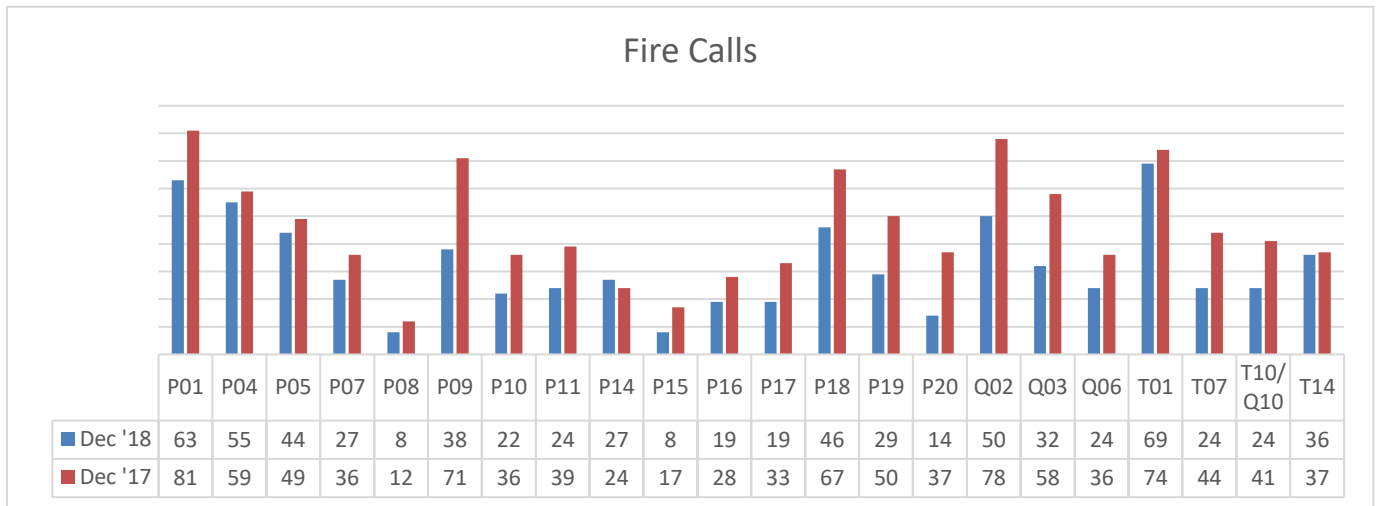
The Kansas City Kansas Department responded to 2589 incidents during the month of December 2018 based on CAD and NFIRS data.



**KCKFD EMS Units responded to an incident 2281 times in December 2018, 2050 times in November 2018 and 2210 times in December of 2017. This number is generated by CAD and NFIRS data. If more than one unit responded, each unit is counted as a response, however the incident is counted only once for our total response count.**



**KCKFD Suppression Units responded to an incident 3036 times in December 2018 and 3022 times in November of 2018. In December of 2017 we responded to 3291 incidents. This number is generated by CAD and NFIRS data. If more than one unit responded, each unit is counted as a response, however, the incident is counted only once for our total response count.**

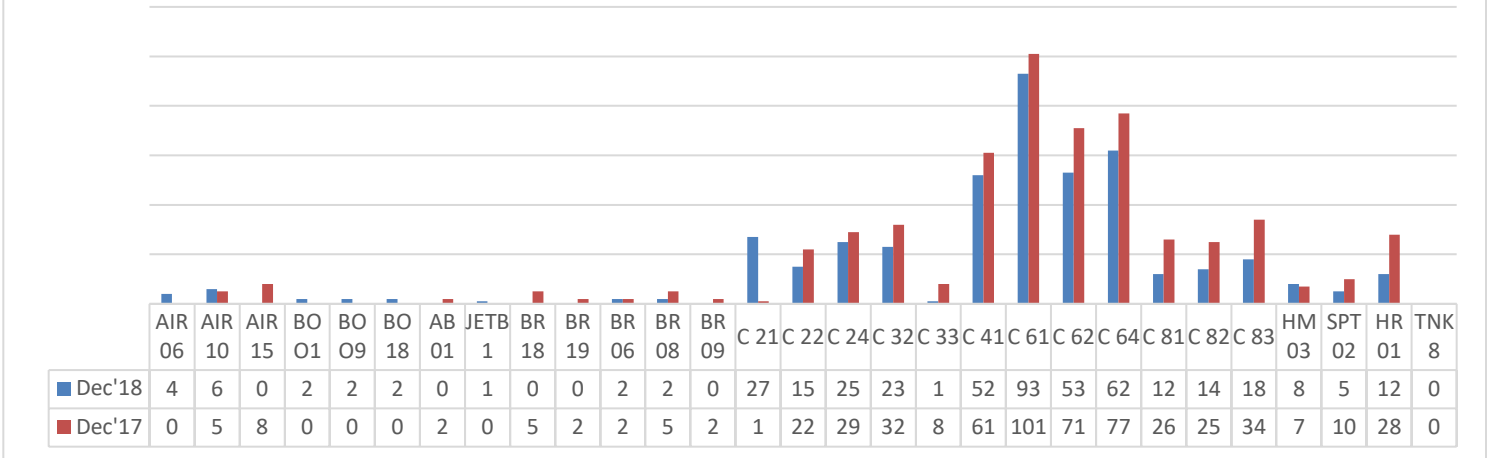


**KCKFD Suppression Units responded to a Fire call 929 times in December 2018. In December of 2017 we responded to 1010 Fire calls. This number is generated CAD and NFIRS data. These calls include:**

- F A/A Business/ Multi Family - F A/A Business/ Multi Family
- F A/A Residence - F A/A Residence
- F Business/ Multi Family Fire - F Business/ Multi Family Fire
- F Controlled Burning - F Controlled Burning
- F Family Dwelling Fire - F Family Dwelling Fire
- F Fire Outside Structure - F Fire Outside Structure
- F Fire/ Explosion Unclassified - F Fire/ Explosion Unclassified
- F Rekindle - F Rekindle
- F Smoke/ Odor Removal - F Smoke/ Odor Removal
- F Spill/ Leak- No Fire - F Spill/ Leak- No Fire
- F Trees/Brush/Grass Fire - F Trees/Brush/Grass Fire
- F Unauthorized Burning - F Unauthorized Burning
- F Vehicle Fire - F Vehicle Fire
- F Vicinity Alarm - F Vicinity Alarm
- Fire - Fire Residential
- Fire Brush Truck - Fire Brush Truck
- Fire Car - Fire Car
- Fire UTV - Fire Utility Vehicle

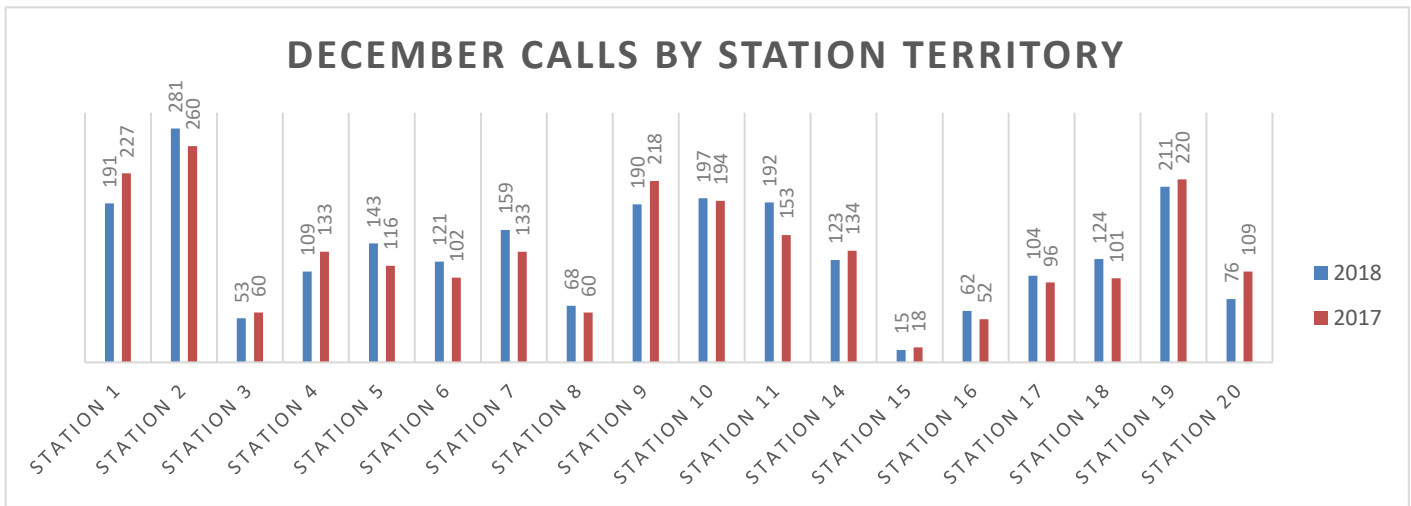


December 2018 / Response Per Specialty/Support Unit



**KCKFD Support/Specialty Units responded to an incident 441 times in December 2018, 444 times in November 2018, and 563 times in November of 2017. This number is generated by CAD and NFIRS data. If more than one unit responded, each unit is counted as a response, however the incident is counted only once for our total response count.**

DECEMBER CALLS BY STATION TERRITORY



**Calls by station territory are determined by first due territory response. Apparatus often respond to incidents in first due territory other than their own. For example: If Pumper 20 responds to an incident in Pumper 19's first due territory, the activity will be reflected in Pumper 20's Response per Suppression Unit but in Station 19's Response by Station Territory. Note: The non-emergency transfers from PMC and KUMC, which elevated the data for Station 10 and Station 19, has been removed from the above table. 189 non-emergency transfers counted only in the EMS Unit that completed the transfer. There are 24 calls not accounted for on this graph. We responded on Mutual Aid, 4 times to Bonner Springs and once to Edwardsville.**



**Incident Types**

100 Fire, other	5
111 Building fire	15
113 Cooking fire, confined to container	2
118 Trash or rubbish fire, contained	1
122 Fire in motor home, camper, recreational vehicle	1
131 Passenger vehicle fire	7
132 Road freight or transport vehicle fire	1
142 Brush or brush-and-grass mixture fire	5
143 Grass fire	3
150 Outside rubbish fire, other	2
151 Outside rubbish, trash or waste fire	5
154 Dumpster or other outside trash receptacle fire	3
160 Special outside fire, other	1
300 Rescue, EMS incident, other	4
311 Medical assist, assist EMS crew	21
321 EMS call, includes calls where	1,301
3211 EMS Refusal	147
3212 EMS call No EMS needed	191
3213 Non Emergency Transfer	173
322 Motor vehicle accident with injuries	37
3221 MVA with refusal	15
323 Motor vehicle/pedestrian accident (MV Ped)	1
324 Motor vehicle accident with no injuries.	26
353 Removal of victim(s) from stalled elevator	2
365 Watercraft rescue	1
3811 Tactical Medic standby	6
412 Gas leak (natural gas or LPG)	13
413 Oil or other combustible liquid spill	1
421 Chemical hazard (no spill or leak)	1
424 Carbon monoxide incident	5
440 Electrical wiring/equipment problem, other	3
441 Heat from short circuit (wiring), defective/worn	1
442 Overheated motor	3
444 Power line down	5
445 Arcing, shorted electrical equipment	9
463 Vehicle accident, general cleanup	1
480 Attempted burning, illegal action, other	1
500 Service Call, other	4
511 Lock-out	4
512 Ring or jewelry removal	1
522 Water or steam leak	1



531 Smoke or odor removal	9
550 Public service assistance, other	11
551 Assist police or other governmental agency	10
552 Police matter	19
553 Public service	10
5531 Public Relations	1
554 Assist invalid	124
555 Defective elevator, no occupants	1
561 Unauthorized burning	40
600 Good intent call, other	2
611 Dispatched & canceled en route	104
621 Wrong location	2
622 No incident found on arrival at dispatch address	52
631 Authorized controlled burning	1
651 Smoke scare, odor of smoke	13
653 Smoke from barbecue, tar kettle	3
671 HazMat release investigation w/no HazMat	8
700 False alarm or false call, other	12
711 Municipal alarm system, malicious false alarm	1
714 Central station, malicious false alarm	1
715 Local alarm system, malicious false alarm	1
721 Bomb scare - no bomb	2
730 System malfunction, other	1
731 Sprinkler activation due to malfunction	5
733 Smoke detector activation due to malfunction	9
735 Alarm system sounded due to malfunction	11
736 CO detector activation due to malfunction	2
740 Unintentional transmission of alarm, other	2
741 Sprinkler activation, no fire - unintentional	2
743 Food on the stove/steam/cigarette smoke Automatic Fire Alarm	65
744 Detector activation, no fire - unintentional	9
745 Alarm system activation, no fire - unintentional	7
746 Carbon monoxide detector activation, no CO	1
Unknown	19



**NFIRS**

***The Goal of the KCKFD is 100% completion for all NFIRS reporting.***

We had 2,588 calls for service for the month of December.

There was an initial completion percentage of 89.9%.

1<sup>st</sup> Shift completed 91.8%

2<sup>nd</sup> Shift completed 92.8%

3<sup>rd</sup> Shift completed 84.8%.

As of this 1/7/19, there are still 42 reports still needing to be completed for December (98.4% completion after 1 notification) and there are only 46 reports still needing to be completed for the year (99.9% completion percentage from 32,291 calls for service).

Of the 46 missing reports, 42 are from December and 4 are from November.

**SMOKE DETECTOR INSTALLATIONS**

In December of 2018, KCKFD Crews installed 6 smoke detectors in 3 residences. Thanks to the following crews:

Second Shift

Station 18 – 2 Smoke detectors

Car 64 – 2 Smoke detectors (Captain Rich Nigh working overtime)

Station 4 – 2 Smoke detectors

***KCKFD crews have installed 98 smoke detectors in 2018.***

**EMS DIVISION**

Transports:

Dec 2018            1453

Dec 2017            1426

Total transports out of STL-Legends    269    (3/19/2018 through 12/31/2018)

Total transports to STL-Legends        024

TUKHS                614    YTD: 7441

PMC                    354    YTD: 4129

SMMC                  145    YTD: 1828

TMC-HH                065

CMH                    047

Refusals                239 (and 4 N/A) for total of 243 non-transport reports

Total Reports/Runs    1696



2018 Runs Per Month:

January	1,705	8.42%
February	1,459	7.20%
March	1,672	8.25%
April	1,585	7.83%
May	1,851	9.14%
June	1,774	8.76%
July	1,756	8.67%
August	1,822	9.00%
September	1,742	8.60%
October	1,613	7.96%
November	1,580	7.80%
December	1,696	8.37%
<b>Total: 20,255</b>		<b>Total: 100.00%</b>

Dec 2018 Runs By Day of Week:

Sunday	241	14.21%
Monday	277	16.33%
Tuesday	248	14.62%
Wednesday	230	13.56%
Thursday	230	13.56%
Friday	219	12.91%
Saturday	251	14.80%
<b>Total: 1,696</b>		<b>Total: 100.00%</b>

Dec 2018 Runs By Hour of Day:

00:00:00 - 00:59:59	49	2.89%
01:00:00 - 01:59:59	45	2.65%
02:00:00 - 02:59:59	35	2.06%
03:00:00 - 03:59:59	24	1.42%
04:00:00 - 04:59:59	32	1.89%
05:00:00 - 05:59:59	28	1.65%
06:00:00 - 06:59:59	38	2.24%
07:00:00 - 07:59:59	53	3.13%
08:00:00 - 08:59:59	67	3.95%
09:00:00 - 09:59:59	85	5.01%
10:00:00 - 10:59:59	87	5.13%
11:00:00 - 11:59:59	112	6.60%

12:00:00 - 12:59:59	96	5.66%
13:00:00 - 13:59:59	108	6.37%
14:00:00 - 14:59:59	109	6.43%
15:00:00 - 15:59:59	91	5.37%
16:00:00 - 16:59:59	75	4.42%
17:00:00 - 17:59:59	98	5.78%
18:00:00 - 18:59:59	78	4.60%
19:00:00 - 19:59:59	87	5.13%
20:00:00 - 20:59:59	79	4.66%
21:00:00 - 21:59:59	95	5.60%
22:00:00 - 22:59:59	72	4.25%
23:00:00 - 23:59:59	53	3.13%
<b>Total: 1,696</b>		<b>Total: 100.00%</b>

**Dec 2018 Runs By Provider Impression:**

Weakness (R53.1)	102
ALOC Altered mental status unspecified etiology (R41.82)	92
Acute pain, not elsewhere classified (G89.1)	91
Acute abdomen discomfort pain (R10.0)	87
no complaints or findings; Adult, Encounter, (Z00.00)	85
Behavioral/Psychiatric Disorder (F99)	72
Seizures without status epilepticus (G40.909)	70
Nausea and vomiting (R11)	49
Chest pain Angina (I20.9)	47
Respiratory distress, acute (J80)	41
Trauma Injury of head (S09.90)	35
	34
Syncope and collapse (R55)	33
Anxiety (F41.9)	32
Respiratory COPD with exacerbation (J44.1)	32
Chest Pain, Other (non-cardiac) (R07.89)	30
Dizziness or light-headedness or vertigo (R42)	29
Trauma injuries multi-system unspecified (T14.90)	27
Back pain non traumatic (M54.9)	23
Respiratory disorder, unspecified (J98.9)	23
Hypertension (I10)	22
Suicidal ideations (R45.851)	22
Hypoglycemia - Diabetes (E13.64)	20
Trauma Injury of lower leg (S89.9)	20
Vomiting, unspecified (R11.10)	20
Acute Stroke suspected (I63.9)	19
Malaise (R53.81)	19
Bedridden (Z74.01)	18
Poisoning, drugs, medication, or other Intentional (T50.902)	18
Alcohol use, unspecified with intoxication (F10.92)	16
Fever (R50.9)	16
Headache (R51)	16
Trauma Injury of face (S09.93)	16
Trauma Injury of lower back (S39.92)	15
Unspecified infectious disease (B99.9)	15
Nonspecific Stimulant/Inhalant Disorders - drug (F15)	14
Hyperglycemia - Diabetes (E13.65)	13
Respiratory Asthma with exacerbation (J45.901)	13
Cardiac arrest (I46.9)	12
Psychoactive substance related disorders, other - drugs (F19)	12
Trauma Injury of wrist, hand and finger(s) (S69.9)	12
Trauma Injury of hip (S79.91)	11





Trauma Injury of shoulder and upper arm (S49.9)	11
Cardiac arrest- Obvious Death (I46)	10
Cardiac arrhythmia/dysrhythmia (I49.9)	10
Respiratory Pneumonia, unspecified (J18.9)	10
Seizures with status epilepticus (G40.901)	10

**Dec 2018 Runs By Dispatch Reason:**

Sick Person	342
Transfer/Interfacility/Palliative Care	189
Breathing Problem	176
Chest Pain (Non-Traumatic)	109
Convulsions/Seizure	103
Unknown Problem/Person Down	99
Falls	95
Traffic/Transportation Incident	89
Unconscious/Fainting/Near-Fainting	53
Hemorrhage/Laceration	52
Psychiatric Problem/Abnormal Behavior/Suicide Attempt	49
Overdose/Poisoning/Ingestion	48
Abdominal Pain/Problems	47
Diabetic Problem	44
Stroke/CVA	35
Cardiac Arrest/Death	29
Assault	26
Heart Problems/AICD	18
Traumatic Injury	18
Pregnancy/Childbirth/Miscarriage	15
Stab/Gunshot Wound/Penetrating Trauma	15
Back Pain (Non-Traumatic)	12

**Dec 2018 Procedures Administered:**

Vascular - (IV)Extremity Vein Catheterization (392230005)	345
Cardiac - 12 lead ECG (268400002)	203
Assessment - Patient Assessment (422618004)	119
Cardiac - 4 lead ECG (428803005)	102
Vascular - Glucometer (Blood Glucose Check) (166900001)	38
Musculoskeletal - Cervical Collar Applied C-Collar (49689007)	37
Vascular - Saline Lock (425074000)	31
Respiratory - BVM Bagged Ventilations (Via Mask) (425447009)	15
Respiratory - CPAP (47545007)	13
Assessment - Orthostatic Vital Signs (425058005)	12
Respiratory - ETCO2 Digital Capnography (425543005)	8
Respiratory - NC nasal cannula (371907003)	8
Vascular - IO Intraosseous cannulation (430824005)	8
Respiratory - OPA Oropharyngeal Airway Insertion (7443007)	7



Soft Tissue - Wound Care (225358003)	7
General - Restraint Applied (Physical) (386423001)	6
Cardiac - Defibrillation (Manual) (426220008)	5
Musculoskeletal - Splinting (General) (79321009)	5
Respiratory - NRB Nonrebreather oxygen mask (427591007)	5
Respiratory - Suction (230040009)	5
Respiratory - Intubation (Orotracheal) (232674004)	4
Cardiac - Autopulse (Automated Compression Device) Continuous Compression Resuscitation (429283006)	3
Respiratory - NPA Nasopharyngeal Airway Insertion (182692007)	3
Finding of blood glucose level (finding) (365812005)	2
General - Patient Cooling (Cold Pack or General) (431774007)	2
Soft Tissue - Pressure Dressing Application (26906007)	2
Cardiac - Pacing (External) (18590009)	1
CCR - Cardiac - (Manual) Continuous Compression Resuscitation (89666000)	1

15 patients identified as meeting Trauma Routing Criteria (& transported RLS)

08 patients identified as meeting STEMI Routing Criteria

17 patients identified as meeting STROKE Routing Criteria

***Thanks for all you do to serve and protect our community!***