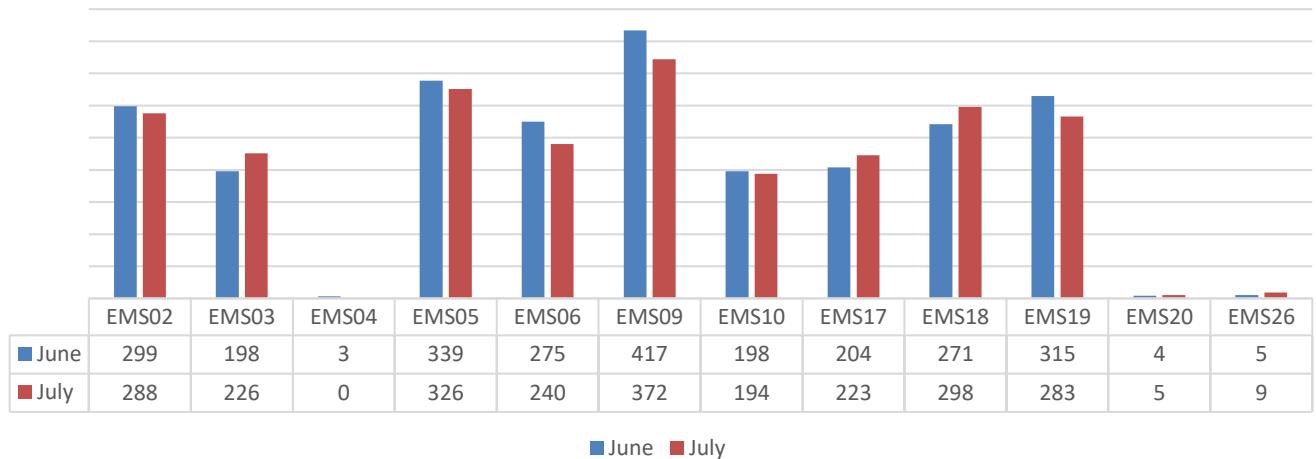




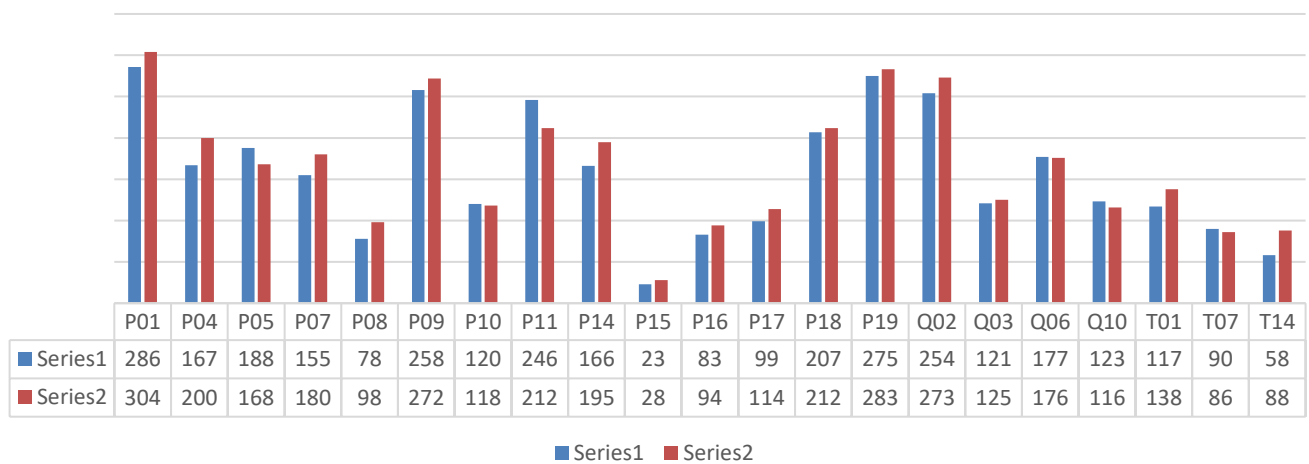
The Kansas City Kansas Department responded to 2,884 incidents during the month of July 2018 based on CAD and NFIRS data.

Response Per EMS Unit



KCKFD EMS Units responded to an incident 2,464 times in July 2018. This number is generated by CAD and NFIRS data. If more than one unit responded, each unit is counted as a response, however the incident is counted only once for our total response count.

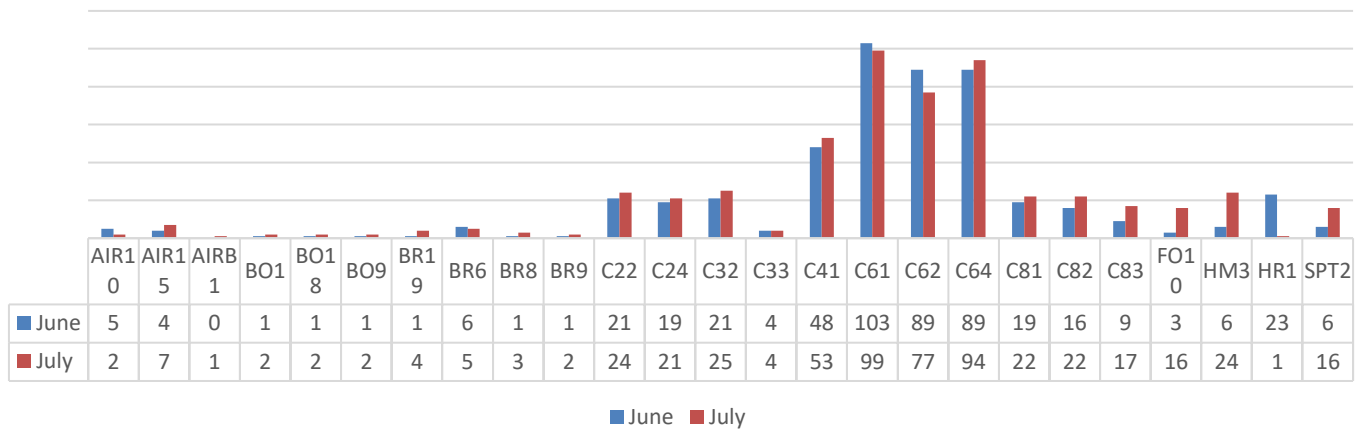
Response Per Suppression Unit



KCKFD Suppression Units responded to an incident 3,005 times in July 2018. This number is generated by CAD and NFIRS data. If more than one unit responded, each unit is counted as a response, however the incident is counted only once for our total response count.

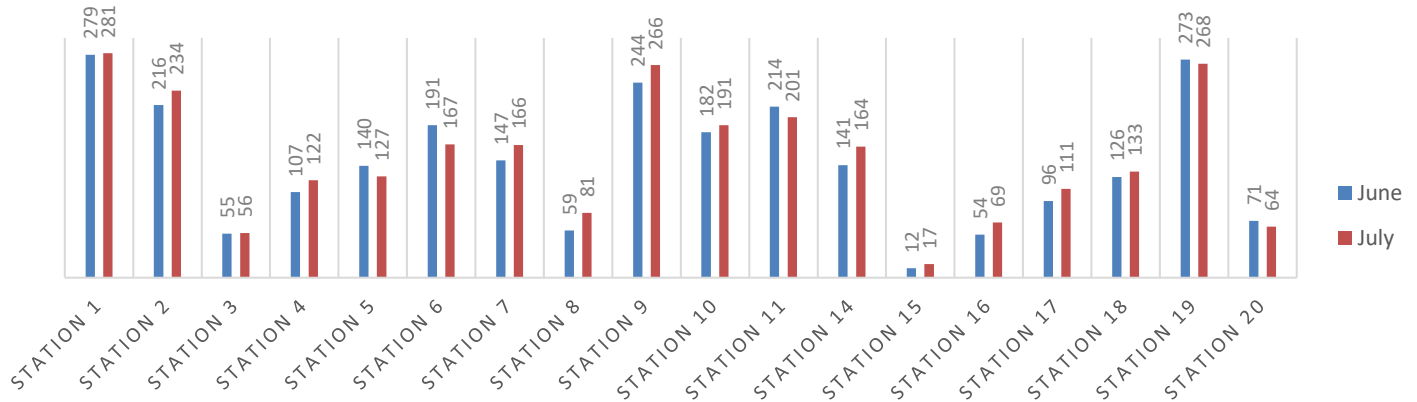


Response Per Specialty/Support Unit



KCKFD Support/Specialty Units responded to an incident 497 times in June 2018 and 545 times in July 2018. This number is generated by CAD and NFIRS data. If more than one unit responded, each unit is counted as a response, however the incident is counted only once for our total response count.

CALLS BY STATION TERRITORY



Calls by station territory are determined by first due territory response. Apparatus often respond to incidents in first due territory other than their own. For example: If Pumper 20 responds to an incident in Pumper 19's first due territory, the activity will be reflected in Pumper 20's Response per Suppression Unit but in Station 19's Response by Station Territory. Note: The non-emergency transfers from PMC and KUMC, which elevated the data for Station 10 and Station 19, has been removed from the above table. 162 non-emergency transfers counted only in the EMS Unit that completed the transfer. There are 166 calls not reflected on this graph. We responded on Mutual Aid, 4 times to Bonner Springs and one time to Edwardsville. There is one uncategorized incident.

**NFIRS**

For the month of July 2018, there are 107 incomplete NFIRS reports for a 96.3% completion rate. There are still 53 un-validated reports for June 2018.

The Goal of the KCKFD is 100% completion for all NFIRS reporting.

Incident Types

100 Fire, other	2
111 Building fire	15
113 Cooking fire, confined to container	2
117 Commercial Compactor fire, confined to rubbish	1
118 Trash or rubbish fire, contained	1
130 Mobile property (vehicle) fire, other	2
131 Passenger vehicle fire	11
138 Off-road vehicle or heavy equipment fire	1
140 Natural vegetation fire, other	5
142 Brush or brush-and-grass mixture fire	8
143 Grass fire	8
150 Outside rubbish fire, other	7
151 Outside rubbish, trash or waste fire	15
154 Dumpster or other outside trash receptacle fire	2
160 Special outside fire, other	5
162 Outside equipment fire	2
251 Excessive heat, scorch burns with no ignition	1
300 Rescue, EMS incident, other	12
311 Medical assist, assist EMS crew	25
321 EMS call, includes calls where	1,364
3211 EMS Refusal	132
3212 EMS call No EMS needed	233
3213 Non Emergency Transfer	162
322 Motor vehicle accident with injuries	47
3221 MVA with refusal	12
323 Motor vehicle/pedestrian accident (MV Ped)	4
324 Motor vehicle accident with no injuries.	34
331 Lock-in (if lock out , use 511)	4
350 Extrication, rescue, other	1
353 Removal of victim(s) from stalled elevator	4
356 High-angle rescue	1
357 Extrication of victim(s) from machinery	1
365 Watercraft rescue	2
371 Electrocution or potential electrocution	1
381 Rescue or EMS standby	3
3811 Tactical Medic standby	5
400 Hazardous condition, other	4
410 Combustible/flammable gas/liquid condition, other	2



411 Gasoline or other flammable liquid spill	2
412 Gas leak (natural gas or LPG)	14
422 Chemical spill or leak	2
424 Carbon monoxide incident	8
441 Heat from short circuit (wiring), defective/worn	2
442 Overheated motor	2
443 Breakdown of light ballast	1
444 Power line down	7
4441 Utility lines down, not power	1
445 Arcing, shorted electrical equipment	5
481 Attempt to burn	3
500 Service Call, other	2
511 Lock-out	4
512 Ring or jewelry removal	1
520 Water problem, other	1
531 Smoke or odor removal	2
541 Animal problem	1
550 Public service assistance, other	12
551 Assist police or other governmental agency	6
552 Police matter	22
553 Public service	17
5531 Public Relations	1
554 Assist invalid	105
561 Unauthorized burning	26
571 Cover assignment, standby, moveup	1
611 Dispatched & canceled en route	168
621 Wrong location	2
622 No incident found on arrival at dispatch address	54
631 Authorized controlled burning	4
650 Steam, other gas mistaken for smoke, other	1
651 Smoke scare, odor of smoke	13
653 Smoke from barbecue, tar kettle	4
661 EMS call, party transported by non-fire agency	1
671 HazMat release investigation w/no HazMat	3
700 False alarm or false call, other	24
711 Municipal alarm system, malicious false alarm	4
731 Sprinkler activation due to malfunction	3
732 Extinguishing system malfunction (activation)	2
733 Smoke detector activation due to malfunction	13
735 Alarm system sounded due to malfunction	23
736 CO detector activation due to malfunction	1
740 Unintentional transmission of alarm, other	2
741 Sprinkler activation, no fire - unintentional	2
743 Food on the stove/steam/cigarette smoke Automatic Fire Alarm	63



744 Detector activation, no fire - unintentional	5
745 Alarm system activation, no fire - unintentional	23
746 Carbon monoxide detector activation, no CO	3
900 Special type of incident, other	1
Unknown	76
Grand Total	2,884

EMS DIVISION

The following EMS data is drawn from incidents entered into Image Trend.

Transports	June	July
TUKHS (KU)	676	622
PMC (Providence)	375	349
SMMC (Shawnee Msn)	145	188
TMC-HH (Truman)	076	083
CMH (Children's)	027	039
Refusals	240	237 (and one N/A) for total of 238 non transport reports
Total	1771	1755

Provider Impression

no complaints or findings; Adult, Encounter, (Z00.00)	105	5.98%
Acute pain, not elsewhere classified (G89.1)	102	5.81%
ALOC Altered mental status unspecified etiology (R41.82)	95	5.41%
Weakness (R53.1)	83	4.73%
Behavioral/Psychiatric Disorder (F99)	82	4.67%
Acute abdomen discomfort pain (R10.0)	81	4.62%
Chest pain Angina (I20.9)	65	3.70%
Seizures without status epilepticus (G40.909)	52	2.96%
Syncope and collapse (R55)	48	2.74%
Trauma injuries multi-system unspecified (T14.90)	46	2.62%
Anxiety (F41.9)	38	2.17%
Trauma Injury of head (S09.90)	37	2.11%
Back pain non traumatic (M54.9)	35	1.99%
Chest Pain, Other (non-cardiac) (R07.89)	33	1.88%
	32	1.82%
Alcohol use, unspecified with intoxication (F10.92)	31	1.77%
Dizziness or light-headedness or vertigo (R42)	30	1.71%
Nausea and vomiting (R11)	30	1.71%
Respiratory COPD with exacerbation (J44.1)	27	1.54%
Trauma Injury of face (S09.93)	26	1.48%
Respiratory distress, acute (J80)	25	1.42%
Suicidal ideations (R45.851)	25	1.42%



Trauma Injury of lower back (S39.92)	19	1.08%
Fever (R50.9)	18	1.03%
Hypertension (I10)	18	1.03%
Respiratory Asthma with exacerbation (J45.901)	18	1.03%
Respiratory disorder, unspecified (J98.9)	17	0.97%
Chronic pain, not elsewhere classified (G89.2)	16	0.91%
Headache (R51)	16	0.91%
Nonspecific Stimulant/Inhalant Disorders - drug (F15)	16	0.91%
Trauma Injury of lower leg (S89.9)	16	0.91%
Acute Stroke suspected (I63.9)	15	0.85%
Cardiac arrest (I46.9)	15	0.85%
Trauma Injury of shoulder and upper arm (S49.9)	15	0.85%
Alcohol use, unspecified (F10.9)	14	0.80%
Cardiac arrhythmia/dysrhythmia (I49.9)	14	0.80%
Hypoglycemia - Diabetes (E13.64)	14	0.80%
Hypotension (I95.9)	14	0.80%
Trauma Injury of hip (S79.91)	14	0.80%
Trauma Injury of neck (S19.9)	14	0.80%
Trauma Injury of wrist, hand and finger(s) (S69.9)	14	0.80%
Malaise (R53.81)	13	0.74%
OB - Pregnancy with contractions (O62.0)	13	0.74%
Psychoactive substance related disorders, other - drugs (F19)	12	0.68%
Heat exposure injuries (T67.9)	10	0.57%
Generalized abdomen pain (R10.84)		

Procedures Administered

Vascular - (IV)Extremity Vein Catheterization	373	Vascular - Glucometer (Blood Glucose Check)	22
Cardiac - 12 lead ECG	215	Respiratory - NC nasal cannula	20
Cardiac - 4 lead ECG	83	Respiratory - BVM Bagged Ventilations (Via Mask)	16
Assessment - Patient Assessment	71	Vascular - IO Intraosseous cannulation	13
Vascular - Saline Lock	30	Respiratory - Intubation (Orotracheal)	12
Musculoskeletal - Cervical Collar Applied C-Collar	29	Soft Tissue - Wound Care	10
Electrocardiographic monitoring	22	Respiratory - CPAP	6

**Runs by Hour of Day:**

00:00:00 - 00:59:59	52	2.96%
01:00:00 - 01:59:59	50	2.85%
02:00:00 - 02:59:59	50	2.85%
03:00:00 - 03:59:59	28	1.60%
04:00:00 - 04:59:59	32	1.82%
05:00:00 - 05:59:59	41	2.34%
06:00:00 - 06:59:59	48	2.74%
07:00:00 - 07:59:59	45	2.56%
08:00:00 - 08:59:59	64	3.65%
09:00:00 - 09:59:59	80	4.56%
10:00:00 - 10:59:59	86	4.90%
11:00:00 - 11:59:59	95	5.41%
12:00:00 - 12:59:59	95	5.41%
13:00:00 - 13:59:59	85	4.84%
14:00:00 - 14:59:59	100	5.70%
15:00:00 - 15:59:59	108	6.15%
16:00:00 - 16:59:59	109	6.21%
17:00:00 - 17:59:59	102	5.81%
18:00:00 - 18:59:59	93	5.30%
19:00:00 - 19:59:59	76	4.33%
20:00:00 - 20:59:59	78	4.44%
21:00:00 - 21:59:59	89	5.07%
22:00:00 - 22:59:59	86	4.90%
23:00:00 - 23:59:59	63	3.59%
Total: 1,755	Total: 100.00%	

Runs by Day of Week:

Sunday	283	16.13%
Monday	280	15.95%
Tuesday	308	17.55%
Wednesday	213	12.14%
Thursday	235	13.39%
Friday	221	12.59%
Saturday	215	12.25%
	Total: 1,755	Total: 100.00%